

SINGLE STAGE VACUUM PUMPS M/58112

- Very high induced air capacity
- 14% lower air consumption than comparable single stage units
- No wearing parts
- Compatible with a wide range of vacuum line contaminants
- Allows direct connection of suction cups and piped exhaust facility



TECHNICAL DATA

Medium:

Compressed air, filtered and non-lubricated

Operating pressure:

- 5 bar optimum
- 8 bar maximum

Operating temperature:

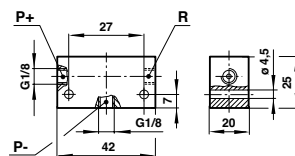
-20° to +150°C

Consult our Technical Service for use below +2°C

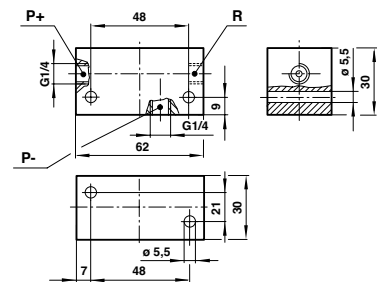
Vacuum:

- 0,85 bar maximum (M/58112/09)
- 0,90 bar maximum (M/58112/11)

M/58112/09



M/58112/11



Induced air (NL/min), free air

Model	0 bar	-0,1 bar	-0,2 bar	-0,3 bar	-0,4 bar	-0,5 bar	-0,6 bar	-0,7 bar	-0,8 bar
M/58112/09	28	24	18	14	11	8	5,5	3	1
M/58112/11	55	47	36	28	23	17	12	6	2,5

Time (sec) for evacuation of 1 litre volume to vacuum

Model	-0,1 bar	-0,2 bar	-0,3 bar	-0,4 bar	-0,5 bar	-0,6 bar	-0,7 bar	-0,8 bar	-0,85 bar	-0,9 bar
M/58112/09	0,27	0,56	0,89	1,44	2,00	2,88	4,31	7,97	14,36	-
M/58112/11	0,15	0,31	0,49	0,72	1,00	1,41	2,08	3,71	5,60	8,11

Note: Values given in the tables are theoretical and apply to an operating pressure of 5 bar.

Recommended tube dimensions (internal diameter)

Model	Compressed air	Vacuum	Exhaust
M/58112/09	> Ø 3	> Ø 5	> Ø 6
M/58112/11	> Ø 3	> Ø 7	> Ø 9

EXPRESS LINKS

Tubing and fittings for vacuum applications...

See pages 226, 254 & 267



For further information
www.norgren.com/info/nec/en074