

IN-LINE VALVES V60 ... 63 Series

3/2, 5/2, 5/3 and 2 x 3/2 solenoid actuated G 1/8 to G 1/2



- High flow rate
- Low power consumption (2 W)

TECHNICAL DATA

- Medium:**
Compressed air, filtered to 50µm, lubricated or non-lubricated
- Operating pressure:**
8 bar maximum, see individual tables
- Flow:**
500 – 4200 l/min
- Voltage:**
24 V d.c., 220 V a.c. (other options available)
- Ambient and medium temperature:**
-10°C ... +50°C
(consult our Technical Service for use below +2°C)

MATERIALS

- Body/sub-base:**
Aluminium
- Softseal spool:**
NBR/stainless steel
- Springs:**
Stainless steel

Models – 3/2 Valves

SOLENOID ACTUATED, INTERNAL PILOT, INDUSTRIAL STANDARD 22MM COIL						
24 DC Push Only M/O	220 AC Push Only M/O	Actuation	Port Size	Flow (l/min)	Operating pressure (bar)	Drawing No.



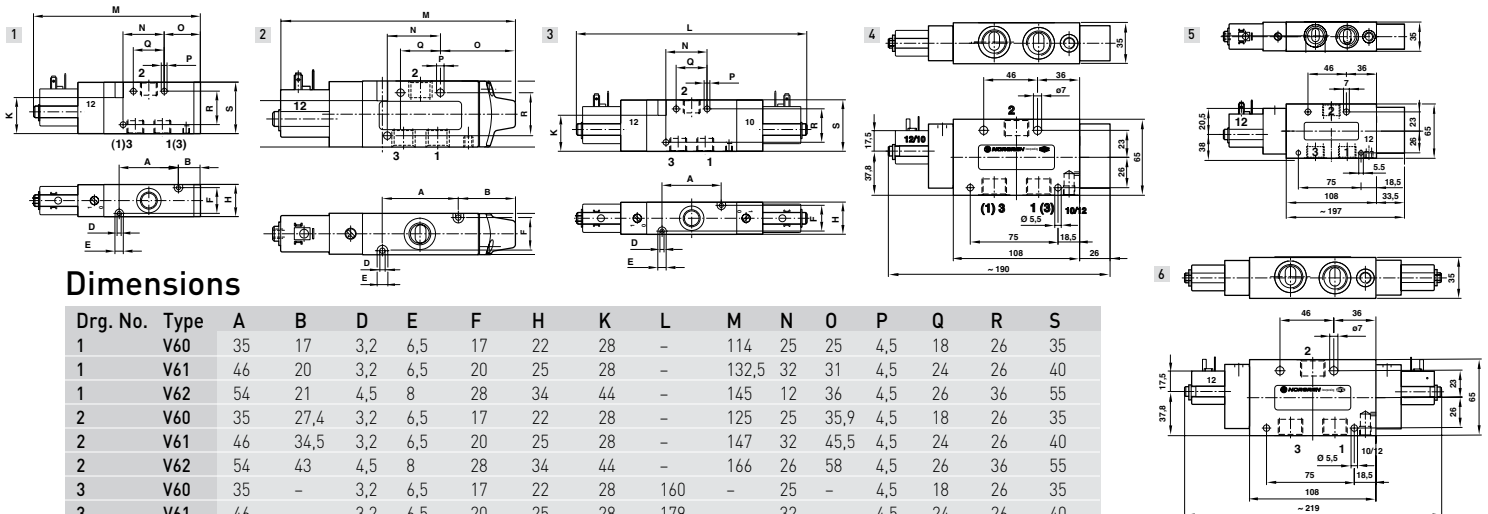
Accessories

Straight fitting	Elbow fitting	Silencer	Basic plug
------------------	---------------	----------	------------



V60A413A-A313J	V60A413A-A319J	Sol/Air spring	G1/8	750	2 ... 8	1	C02250618	C02470618	T40C1800	M/P19063
V61B413A-A313J	V61B413A-A319J	Sol/Air spring	G1/4	1300	2 ... 8	1	C02250828	C02470828	T40C2800	M/P19063
V62C413A-A313J	V62C413A-A319J	Sol/Air spring	G3/8	2600	2 ... 8	1	C02251038	C02471038	T40C3800	M/P19063
V63D413A-A313J	V63D413A-A319J	Sol/Air spring	G1/2	4200	2 ... 8	4	C02251248	C02471248	T40C4800	M/P19063
V60A417A-A313J	V60A417A-A319J	Sol/Spring	G1/8	750	2 ... 8	2	C02250618	C02470618	T40C1800	M/P19063
V61B417A-A313J	V61B417A-A319J	Sol/Spring	G1/4	1300	2 ... 8	2	C02250828	C02470828	T40C2800	M/P19063
V62C417A-A313J	V62C417A-A319J	Sol/Spring	G3/8	2600	2 ... 8	2	C02251038	C02471038	T40C3800	M/P19063
V63D417A-A313J	V63D417A-A319J	Sol/Spring	G1/2	4200	2 ... 8	5	C02251248	C02471248	T40C4800	M/P19063
V60A411A-A313J	V60A411A-A319J	Sol/Sol	G1/8	750	1,5 ... 8	3	C02250618	C02470618	T40C1800	M/P19063
V61B411A-A313J	V61B411A-A319J	Sol/Sol	G1/4	1300	1,5 ... 8	3	C02250828	C02470828	T40C2800	M/P19063
V62C411A-A313J	V62C411A-A319J	Sol/Sol	G3/8	2600	1,5 ... 8	3	C02251038	C02471038	T40C3800	M/P19063
V63D411A-A313J	V63D411A-A319J	Sol/Sol	G1/2	4200	1,5 ... 8	6	C02251248	C02471248	T40C4800	M/P19063

Note: For models with 22mm coil DIN EN 175301-803 [DIN 43650B] replace J by L. Pilot actuated versions also available.



Dimensions

Drg. No.	Type	A	B	D	E	F	H	K	L	M	N	O	P	Q	R	S
1	V60	35	17	3,2	6,5	17	22	28	-	114	25	25	4,5	18	26	35
1	V61	46	20	3,2	6,5	20	25	28	-	132,5	32	31	4,5	24	26	40
1	V62	54	21	4,5	8	28	34	44	-	145	12	36	4,5	26	36	55
2	V60	35	27,4	3,2	6,5	17	22	28	-	125	25	35,9	4,5	18	26	35
2	V61	46	34,5	3,2	6,5	20	25	28	-	147	32	45,5	4,5	24	26	40
2	V62	54	43	4,5	8	28	34	44	-	166	26	58	4,5	26	36	55
3	V60	35	-	3,2	6,5	17	22	28	160	-	25	-	4,5	18	26	35
3	V61	46	-	3,2	6,5	20	25	28	179	-	32	-	4,5	24	26	40
3	V62	54	-	4,5	8	28	34	44	194	-	12	-	4,5	26	36	55

www.norgren.com/info/nec/en103

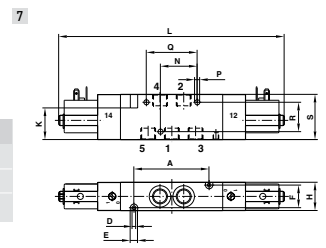


IN-LINE VALVES V60 ... 63 Series

Solenoid actuated 3/2, 5/2, 5/3 and 2 x 3/2

Models – 2 x 3/2 Valves

SOLENOID ACTUATED, INTERNAL PILOT, INDUSTRIAL STANDARD 22MM COIL							Drawing No.	Straight fitting	Elbow fitting	Silencer	Basic plug
24 DC Push Only M/O	220 AC Push Only M/O	Actuation	Port size	Flow (l/min)	Operating pressure (bar)						
V60AA11A-A313J	V60AA11A-A319J	Sol/Spring NC	G1/8	500	2 ... 8	7	C02250618	C02470618	T40C1800	M/P19063	
V61BA11A-A313J	V61BA11A-A319J	Sol/Spring NC	G1/4	950	2 ... 8	7	C02250828	C02470828	T40C2800	M/P19063	
V62CA11A-A313J	V62CA11A-A319J	Sol/Spring NC	G3/8	1900	2 ... 8	7	C02251038	C02471038	T40C3800	M/P19063	



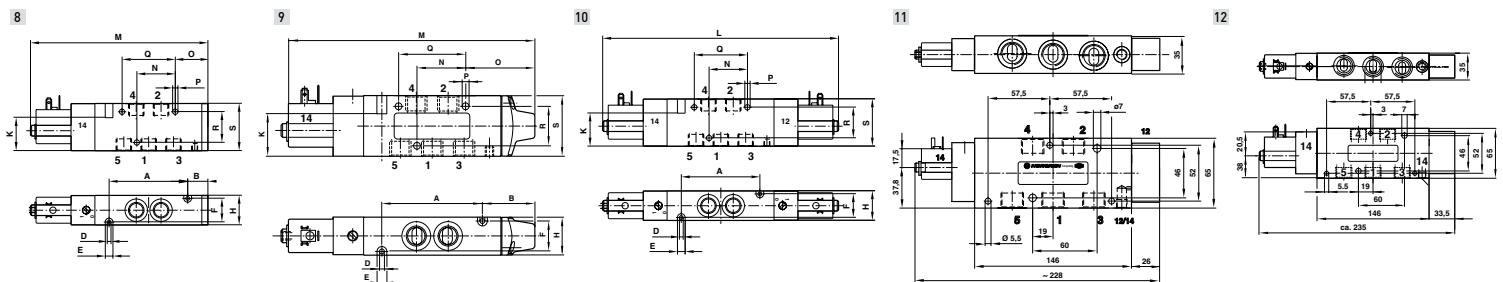
Dimensions

Drg. No.	Type	A	D	E	F	H	K	L	M	N	O	P	Q	R	S
7	V60	50	3,2	6,5	17	22	28	175	-	25	-	4,5	33,6	26	35
7	V61	66	3,2	6,5	20	25	28	199	-	32	-	4,5	44	26	40
7	V62	78	4,5	8	28	34	44	218	-	12	-	4,5	26	36	55

Models – 5/2 Valves

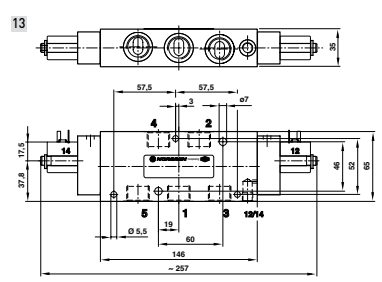
SOLENOID ACTUATED, INTERNAL PILOT, INDUSTRIAL STANDARD 22MM COIL							Drawing No.	Straight fitting	Elbow fitting	Silencer	Basic plug
24 DC Push Only M/O	220 AC Push Only M/O	Actuation	Port size	Flow (l/min)	Operating pressure (bar)						
V60A513A-A313J	V60A513A-A319J	Sol/Air spring	G1/8	750	2 ... 8	8	C02250618	C02470618	T40C1800	M/P19063	
V61B513A-A313J	V61B513A-A319J	Sol/Air spring	G1/4	1300	2 ... 8	8	C02250828	C02470828	T40C2800	M/P19063	
V62C513A-A313J	V62C513A-A319J	Sol/Air spring	G3/8	2600	2 ... 8	8	C02251038	C02471038	T40C3800	M/P19063	
V63D513A-A313J	V63D513A-A319J	Sol/Air spring	G1/2	4200	2 ... 8	11	C02251248	C02471248	T40C4800	M/P19063	
V60A517A-A313J	V60A517A-A319J	Sol/Spring	G1/8	750	2 ... 8	9	C02250618	C02470618	T40C1800	M/P19063	
V61B517A-A313J	V61B517A-A319J	Sol/Spring	G1/4	1300	2 ... 8	9	C02250828	C02470828	T40C2800	M/P19063	
V62C517A-A313J	V62C517A-A319J	Sol/Spring	G3/8	2600	2 ... 8	9	C02251038	C02471038	T40C3800	M/P19063	
V63D517A-A313J	V63D517A-A319J	Sol/Spring	G1/2	4200	2 ... 8	12	C02251248	C02471248	T40C4800	M/P19063	
V60A511A-A313J	V60A511A-A319J	Sol/Sol	G1/8	750	2 ... 8	10	C02250618	C02470618	T40C1800	M/P19063	
V61B511A-A313J	V61B511A-A319J	Sol/Sol	G1/4	1300	2 ... 8	10	C02250828	C02470828	T40C2800	M/P19063	
V62C511A-A313J	V62C511A-A319J	Sol/Sol	G3/8	2600	2 ... 8	10	C02251038	C02471038	T40C3800	M/P19063	
V63D511A-A313J	V63D511A-A319J	Sol/Sol	G1/2	4200	2 ... 8	13	C02251248	C02471248	T40C4800	M/P19063	

Note: For models with 22mm coil DIN EN 175301-803 (DIN 43650B) replace J by L. Pilot actuated versions also available.



Dimensions

Drg. No.	Type	A	B	D	E	F	H	K	L	M	N	O	P	Q	R	S
8	V60	50	17	3,2	6,5	17	22	28	-	129	25	25	4,5	33,6	26	35
8	V61	66	20	3,2	6,5	20	25	28	-	152,5	32	31	4,5	44	26	40
8	V62	78	21	4,5	8	28	34	44	-	170	12	60	4,5	26	36	55
9	V60	50	17	3,2	6,5	17	22	28	-	140	25	35,7	4,5	33,6	26	35
9	V61	66	34,5	3,2	6,5	20	25	28	-	167	32	45,5	4,5	44	26	40
9	V62	78	43	4,5	8	28	34	44	-	191	12	82	4,5	26	36	55
10	V60	50	-	3,2	6,5	17	22	28	175	-	25	-	4,5	33,6	26	35
10	V61	66	-	3,2	6,5	20	25	28	199	-	32	-	4,5	44	26	40
10	V62	78	-	4,5	8	28	34	44	218	-	12	-	4,5	26	36	55



IN-LINE VALVES V60 ... 63 Series

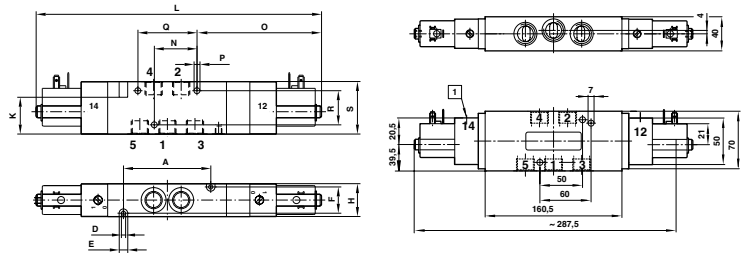
Solenoid actuated 3/2, 5/2, 5/3 and 2 x 3/2

Models – 5/3 Valves

Accessories

SOLENOID ACTUATED, INTERNAL PILOT, INDUSTRIAL STANDARD 22MM COIL							Drawing No.	Straight fitting	Elbow fitting	Silencer	Basic plug
24 DC Push Only M/O	220 AC Push Only M/O	Actuation	Port size	Flow (l/min)	Operating pressure (bar)						
	V60A611A-A313J	Sol/Sol APB	G1/8	500	3 ... 8	14	C02250618	C02470618	T40C1800	M/P19063	
V61B611A-A313J	V61B611A-A319J	Sol/Sol APB	G1/4	950	3 ... 8	14	C02250828	C02470828	T40C2800	M/P19063	
V62C611A-A313J	V62C611A-A319J	Sol/Sol APB	G3/8	1900	3 ... 8	14	C02251038	C02471038	T40C3800	M/P19063	
V63D611A-A313J	V63D611A-A319J	Sol/Sol APB	G1/2	2200	2,5 ... 8	15	C02251248	C02471248	T40C4800	M/P19063	
V60A711A-A313J	V60A711A-A319J	Sol/Sol COE	G1/8	500	3 ... 8	14	C02250618	C02470618	T40C1800	M/P19063	
V61B711A-A313J	V61B711A-A319J	Sol/Sol COE	G1/4	950	3 ... 8	14	C02250828	C02470828	T40C2800	M/P19063	
V62C711A-A313J	V62C711A-A319J	Sol/Sol COE	G3/8	1900	3 ... 8	14	C02251038	C02471038	T40C3800	M/P19063	
V63D711A-A313J	V63D711A-A319J	Sol/Sol COE	G1/2	2200	2,5 ... 8	15	C02251248	C02471248	T40C4800	M/P19063	
V60A811A-A313J	V60A811A-A319J	Sol/Sol COP	G1/8	500	3 ... 8	14	C02250618	C02470618	T40C1800	M/P19063	
V61B811A-A313J	V61B811A-A319J	Sol/Sol COP	G1/4	950	3 ... 8	14	C02250828	C02470828	T40C2800	M/P19063	
V62C811A-A313J	V62C811A-A319J	Sol/Sol COP	G3/8	1900	3 ... 8	14	C02251038	C02471038	T40C3800	M/P19063	

Note: For models with 22mm coil DIN EN 175301-803 (DIN 43650B) replace J by L. Pilot actuated versions also available. APB = All Ports Blocked, COE = Centre Open Exhaust, COP = Centre Open Pressure



Dimensions

Drg. No.	Type	A	B	D	E	F	H	K	M	N	O	P	Q	R	S
14	V60	50	-	3,2	6,5	17	22	28	189	25	84,5	4,5	33,6	26	35
14	V61	66	-	3,2	6,5	20	25	28	217	32		4,5	44	26	40
14	V62	78	-	4,5	8	28	34	44	241	12	132	4,5	26	36	55

Voltage codes and spare coils

22MM COIL INDUSTRIAL STANDARD			
Model	Voltage	Coil code	Power inrush/hold
QM/48/13J/21	24 V d.c.	13J	2 W
QM/48/19J/21	220/240 V 50/60 Hz	19J	6/5 VA

22MM COIL DIN EN 175 301-803, TYPE B			
Model	Voltage	Coil code	Power inrush/hold
V10626-A13L	24 V d.c.	13L	2 W
V10626-A19L	220/240 V 50/60 Hz	19L	6/5 VA

Connector plugs must be ordered separately. Other voltages available, please call your Express Team.

Models – Manifold system

FOR 2 X3/2, 5/2, 5/3 VALVES, SOLENOID OPERATED			Number of stations	
V60	V61	V62		
	2221002000000000	2221102000000000	2221202000000000	2
	2221003000000000	2221103000000000	2221203000000000	3
	2221004000000000	2221104000000000	2221204000000000	4
	2221006000000000	2221106000000000	2221206000000000	6
	2221008000000000	2221108000000000	2221208000000000	8
	2221010000000000	2221110000000000	-	10
	2221012000000000	2221112000000000	-	12

Not suitable for individual 3/2 valves.

EXPRESS LINKS

Connectors and cables

For a full selection of 22 mm Industrial Standard or DIN EN175301-803 Form B plugs and cables please see page 151

