

PROPORTIONAL PRESSURE CONTROL VALVE

VP51 Series – Programmable

G1/4



Closed loop air pilot digital proportional control valve

Fully programmable with on-board diagnostics

Ability to set up offline

Multi-language menu option

Password protection option at first level functionality

Instant LED warning functions

Pressure output display; no gauge necessary

High speed response

TECHNICAL DATA

Medium:

Compressed air, filtered to 50 µm, non-lubricated

Output pressure:

User adjustable up to 10 bar

Supply pressure:

14 bar

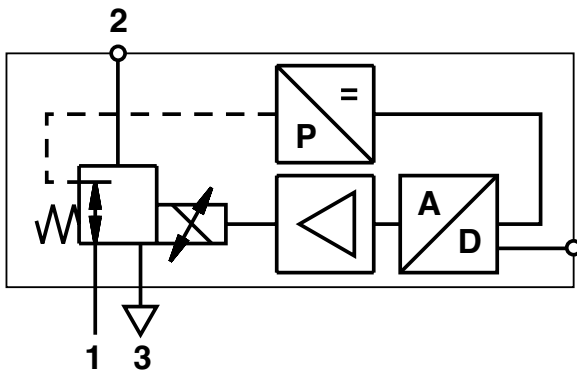
Flow:

Up to 1200 l/min


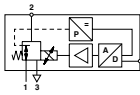




Ambient temperature:

-20°C ... +50°C

Consult our Technical Service for use below +2°C.



Models

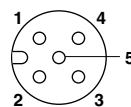
Model	Actuation	Port Size	Flow (l/min)	Operating pressure (bar)	Control signal	Straight fitting	Elbow fitting	Silencer	Connector with 5m moulded cable
									
VP5110BJ111H00		G1/4	1200	0..10	0..10 V	C02250828	C02470828	T40C2800	0250081000000000
VP5110BJ411H00		G1/4	1200	0..10	4..20 mA	C02250828	C02470828	T40C2800	0250081000000000

Accessories

Electrical Information

Electromagnetic compatibility	CE marked: conforms to EC requirements EN 50081-2 (1994) and EN 50082-2 (1995)
Electrical input signal	4 to 20 mA or 0 to 10 V factory set
Electrical power input	24 V d.c. ±25% (power consumption < 1 W)
Output pressure feedback signal	0 ... 10 V full range or user-configurable switched output
Connections	M12 5 pin

Pin configuration



1	+24 V d.c. supply
2	Monitor output
3	Control signal (+ve)
4	Common (DC supply, signal and feedback return)
5	Chassis (earth)

For further information
www.norgren.com/info/nec/en121

