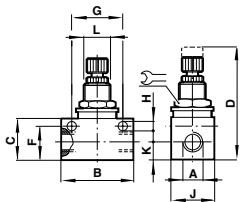


# BLOCK FORM FLOW REGULATORS T1100 series

Bi-directional – G1/8 and G1/4



## Dimensions

| Model      | A    | B  | C    | D    | F    | G  | H   | J  | K   | L     |    |
|------------|------|----|------|------|------|----|-----|----|-----|-------|----|
| T1100C1800 | G1/8 | 34 | 20   | 51   | 16,5 | 24 | 4,5 | 16 | 8   | M12x1 | 14 |
| T1100C2800 | G1/4 | 45 | 25,4 | 61,5 | 20,8 | 32 | 4,5 | 19 | 9,5 | M14x1 | 17 |

## Models

| Model      | Function       | Port size | Max. regulated flow factor C* | CV   | Critical pressure ratio (b) | Minimum operating pressure (bar)** |
|------------|----------------|-----------|-------------------------------|------|-----------------------------|------------------------------------|
| T1100C1800 | Bi-directional | G1/8      | 0,57                          | 0,14 | 0,2                         | 0                                  |
| T1100C2800 | Bi-directional | G1/4      | 1,3                           | 0,32 | 0,2                         | 0                                  |

\*C: measured in dm<sup>3</sup>/(s.bar)

- Compact size/low weight/ in-line units
- High flow performance
- Suitable for panel and wall mounting
- Two gain flow control
- Adjustment can be locked
- Captive regulator needle will not blow out when unscrewed
- Adjusting knob position line

## TECHNICAL DATA

### Medium:

Compressed air, filtered, lubricated or non-lubricated, inert gases

### Operating pressure:

0 to 10 bar

### Ambient temperature:

-20°C to +80°C

Consult our Technical Service for use below +2°C

## MATERIALS

Body: aluminium alloy

Seals: nitrile

Needle and internal parts: brass

External parts: aluminium alloy

## EXPRESS LINKS

### For compatible...

BSP and hose fittings  
please see page 261



For further information  
[www.norgren.com/info/nec/en145](http://www.norgren.com/info/nec/en145)

