

PNEUFIT C COMPOSITE FITTINGS

Metric Ø 3 to 16 mm O/D tube

Norgren Pneufit® C fittings are ready to use, offering fast assembly with no need for tools and providing optimum flow

Pneufit® C offers a broad range of over 1,000 composite push-in pneumatic fittings to complement our established all brass Pneufit® series

Releasable stainless-steel grab-ring to grip nylon or polyurethane tube (85 or 95 durometer)

Nickel plated brass components provide corrosion and contamination resistance and an extended life

Pre applied thread sealant on all taper threads and recessed captive O-ring on parallel threads provides optimum rapid sealing

Internal and external hexagons on straight fittings

Immediate quality sealing using silicone free U-packing

Mounting holes on all union fittings



TECHNICAL DATA

Medium:

Compressed air

Operating pressure:

750 mm Hg vacuum, up to 10 bar

Ambient temperature:

0 to 60°C

Consult our Technical Service for use below +2°C

Tube sizes:

Standard sizes: 3, 4, 6, 8, 10, 12, 16 mm

Warning: The push-in tube fittings in this section must not be used in vehicle air braking and ancillary systems. For push-in fittings suitable for these applications please refer to Fleetfit fittings on page 251.

Thread sizes:

Standard sizes: M5, M6, 1/8", 1/4", 3/8" and 1/2" ISO G and ISO Rc

Tubing:

Nylon 11 or 12

Polyurethane 85, 95 or 98 durometer

MATERIALS

Body: PBT

Seals: NBR (silicone free) u-packing and O-rings

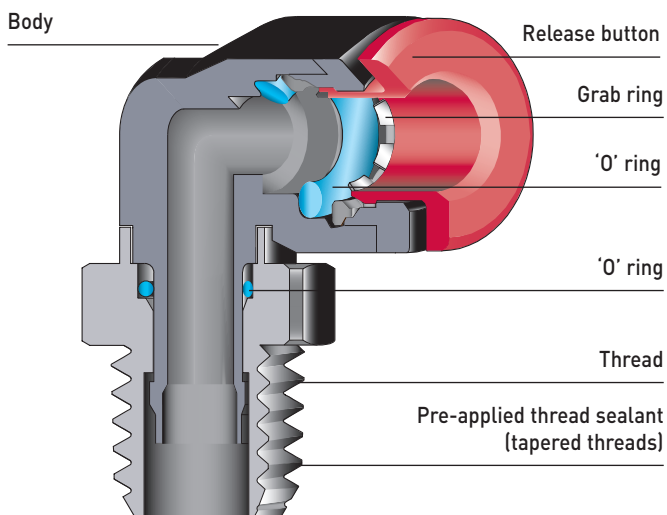
Threaded bodies: Nickel plated brass

Release sleeve and backing ring: POM

Grab-ring: Stainless steel

Collar: Nickel plated brass

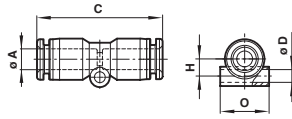
Thread sealant: Threebond 2350B



For further information
www.norgren.com/info/nec/en226

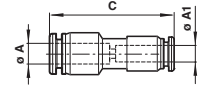
PNEUFIT C COMPOSITE FITTINGS

Metric Ø 3 to 16 mm O/D tube



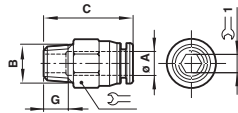
Straight Union

Model No.	O/D Tube (Ø A)	C	ØD	H	Ø
C00200400	4	34,5	3,3	4,5	10,5
C00200600	6	37	3,3	5,5	12,5
C00200800	8	39,5	4,3	7	14,5
C00201000	10	43	4,3	8	17,5
C00201200	12	48	4,3	9,5	20,5
C00201600	16	51	-	-	-



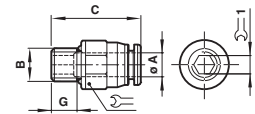
Straight Union (unequal)

Model No.	O/D Tube (Ø A)	O/D Tube (Ø A1)	C
C00200604	6	4	36,5
C00200804	8	4	38,5
C00200806	8	6	37,5
C00201006	10	6	40
C00201008	10	8	41
C00201208	12	8	46
C00201210	12	10	44
C00201612	16	12	49,5



Straight Adaptor (external + internal hex)

Model No.	O/D Tube (Ø A)	BSPT Thread (B)	C	G	Wrench 1	Wrench 2
C01250418	4	R1/8	21,5	8	10	3
C01250428	4	R1/4	20,5	10	14	3
C01250438	4	R3/8	22	11	17	3
C01250618	6	R1/8	22	8	12	4
C01250628	6	R1/4	21	10	14	5
C01250638	6	R3/8	22	11	17	5
C01250648	6	R1/2	29,5	14	19	5
C01250818	8	R1/8	27,5	8	14	5
C01250828	8	R1/4	25,5	10	14	6
C01250838	8	R3/8	23	11	17	6
C01250848	8	R1/2	29,5	14	19	6
C01251018	10	R1/8	28,5	8	17	5
C01251028	10	R1/4	30,5	10	17	6
C01251038	10	R3/8	24,5	11	17	8
C01251048	10	R1/2	29,5	14	19	8
C01251218	12	R1/8	31,5	8	19	5
C01251228	12	R1/4	33	10	19	6
C01251238	12	R3/8	30	11	19	8
C01251248	12	R1/2	30	14	19	8
C01251638	16	R3/8	37,5	11	24	10
C01251648	16	R1/2	40,5	14	24	10



Straight Adaptor (external + internal hex)

Model No.	O/D Tube (Ø A)	Metric & BSPP Thread (B)	C	G	Wrench 1	Wrench 2
C02250405	4	M5	22	4	10	-
C02250406	4	M6	22	8	10	-
C02250418	4	G1/8	21,5	6	13	3
C02250428	4	G1/4	23,5	8	15	3
C02250438	4	G3/8	22	8	17	-
C02250605	6	M5	23,5	5	12	-
C02250606	6	M6	23	4	12	4
C02250618	6	G1/8	26,5	6	13	5
C02250628	6	G1/4	24,5	8	15	5
C02250638	6	G3/8	25,5	8	17	5
C02250818	8	G1/8	26,5	6	15	5
C02250828	8	G1/4	26,5	8	15	6
C02250838	8	G3/8	25	8	17	6
C02250848	8	G1/2	26	9	21	6
C02251018	10	G1/8	29,5	6	17	5
C02251028	10	G1/4	30	8	17	6
C02251038	10	G3/8	27	8	17	8
C02251048	10	G1/2	28,5	9	21	8
C02251228	12	G1/4	32	8	19	6
C02251238	12	G3/8	31,5	8	19	8
C02251248	12	G1/2	31,5	9	21	8
C02251638	16	G3/8	36,5	8	24	10
C02251648	16	G1/2	36,5	9	24	10

EXPRESS PLUS

Pneufit C Fittings Box

6 and 8mm fittings in 21 of the most used shapes and sizes in a purpose built durable fittings box. Contact your Express Team.



EXPRESS PLUS

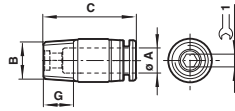
Fittings Wall Chart

Contact Norgren for a FREE Fittings Wall Chart.



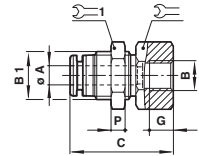
PNEUFIT C COMPOSITE FITTINGS

Metric Ø 3 to 16 mm O/D tube



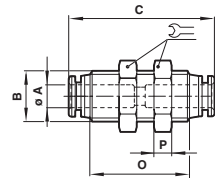
Straight Adaptor (internal hex only)

Model No.	O/D Tube (ØA)	Metric & BSPT Thread (B)	C	G	Wrench Size
C022A0405	4	M5	22	4,5	2
C022A0406	4	M6	22	4	3
C012A0418	4	R1/8	20,5	8	3
C012A0428	4	R1/4	20,5	10	3
C012A0438	4	R3/8	20,5	11	3
C022A0605	6	M5	22,5	5	2
C022A0606	6	M6	22,5	4	3
C012A0618	6	R1/8	22	8	4
C012A0628	6	R1/4	22,5	10	4
C012A0638	6	R3/8	22,5	11	4
C012A0818	8	R1/8	27	8	5
C012A0828	8	R1/4	25	10	6
C012A0838	8	R3/8	25	11	6
C012A0848	8	R1/2	25	14	6
C012A1018	10	R1/8	28	8	5
C012A1028	10	R1/4	29	10	6
C012A1038	10	R3/8	29	11	8
C012A1048	10	R1/2	29	14	8
C012A1218	12	R1/8	35	8	5
C012A1228	12	R1/4	32,5	10	6
C012A1238	12	R3/8	32,5	11	8
C012A1248	12	R1/2	32,5	14	8



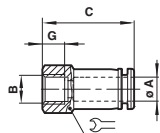
Straight Adaptor (female bulkhead)

Model No.	O/D Tube (ØA)	BSPP Thread (B)	B1	C	G	P	Wrench Size	Wrench Size
C02320418	4	G1/8	M12x1	26,5	9	4	14	14
C02320428	4	G1/4	M12x1	29	11	4	14	17
C02320438	4	G3/8	M12x1	30	12	4	14	22
C02320618	6	G1/8	M14x1	28,5	9	4	17	17
C02320628	6	G1/4	M14x1	30,5	11	4	17	17
C02320638	6	G3/8	M14x1	31,5	12	4	17	22
C02320818	8	G1/8	M16x1	29,5	9	5	19	19
C02320828	8	G1/4	M16x1	31,5	11	5	19	19
C02320838	8	G3/8	M16x1	32,5	12	5	19	22
C02321028	10	G1/4	M20x1	32,5	11	5	24	24
C02321038	10	G3/8	M20x1	33,5	12	5	24	24
C02321048	10	G1/2	M20x1	36	14	5	24	24
C02321228	12	G1/4	M22x1	38	11	5	28	24
C02321238	12	G3/8	M22x1	38	12	5	24	26
C02321248	12	G1/2	M22x1	40	14	5	24	26



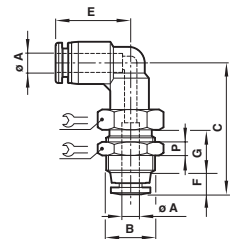
Bulkhead Union

Model No.	O/D Tube (ØA)	B	C	O	P	Wrench Size
C00290400	4	M12x1	35,5	24,5	4	14
C00290600	6	M14x1	40	27,5	4	17
C00290800	8	M16x1	42	29,5	5	19
C00291000	10	M20x1	45	31,5	5	24
C00291200	12	M22x1	50,5	36	5	26



Female Adaptor

Model No.	O/D Tube (ØA)	Female BSPP (B)	C	G	Wrench Size
C02260405	4	M5	26	7	12
C02260418	4	G1/8	26,5	9	14
C02260428	4	G1/4	28,5	11	17
C02260438	4	G3/8	30	12	22
C02260618	6	G1/8	27,5	9	14
C02260628	6	G1/4	29,5	11	17
C02260638	6	G3/8	30	12	22
C02260818	8	G1/8	28,5	9	14
C02260828	8	G1/4	30,5	11	17
C02260838	8	G3/8	31,5	12	22
C02260848	8	G1/2	34,5	14	24
C02261018	10	G1/8	31,5	9	17
C02261028	10	G1/4	31,5	11	17
C02261038	10	G3/8	32,5	12	22
C02261048	10	G1/2	34,5	14	24
C02261228	12	G1/4	34,5	11	22
C02261238	12	G3/8	34,5	12	22
C02261248	12	G1/2	36,5	14	24



Bulkhead Union Elbow

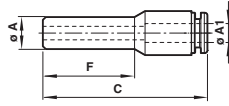
Model No.	O/D Tube (ØA)	B	C	E	F	G	P	Wrench Size
C00490400	4	M12x1	32,5	18,5	5,5	9	4	14
C00490600	6	M14x1	38	20,5	6	11	4	17
C00490800	8	M16x1	40,5	23	6,5	11,5	5	19
C00491000	10	M20x1	42,5	23,5	7	12	5	24
C00491200	12	M22x1	48	27,5	7,5	15	5	26

FITTINGS, TUBING & ACCESSORIES

6

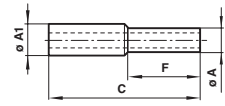
PNEUFIT C COMPOSITE FITTINGS

Metric \varnothing 3 to 16 mm O/D tube



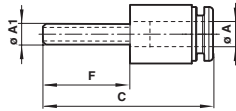
Stem Reducer

Model No.	O/D Stem (ØA)	O/D Tube (ØA1)	C	F
C00230604	6	4	41	21,5
C00230804	8	4	42	22,5
C00230806	8	6	44,5	23,5
C00231006	10	6	47,5	26,5
C00231008	10	8	49,5	27,5
C00231206	12	6	52	29,5
C00231208	12	8	52,5	30,5
C00231210	12	10	56,5	31
C00231612	16	12	57,5	33



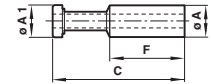
Stem Union (unequal)

Model No.	O/D Tube (ØA)	O/D Stem (ØA1)	C	F
C00220604	4	6	38	18
C00220806	6	8	41,5	20,5
C00221008	8	10	43,5	21,5
C00221210	10	12	46,5	22,5
C00221612	12	16	52	25



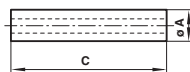
Stem Expander (stem/tube)

Model No.	O/D Stem (ØA)	O/D Tube (ØA1)	C	F
C00230406	6	4	41	24
C00230608	8	6	44	26,5



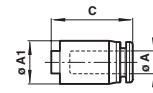
Plug

Model No.	O/D Tube (ØA)	ØA1	C	F
C00040400	4	4	30	17,5
C00040600	6	6	34	18,5
C00040800	8	8	38	21
C00041000	10	10	42	24
C00041200	12	12	46	29,5
C00041600	16	16	50	30



Stem Union

Model No.	O/D Tube (ØA)	C
C00220400	4	37
C00220600	6	38
C00220800	8	41
C00221000	10	44
C00221200	12	49
C00221600	16	53

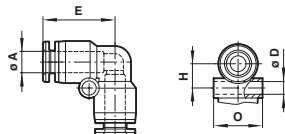


Cap (female plug)

Model No.	O/D Tube (ØA)	ØA1	C
C00120400	4	10,5	18
C00120600	6	12,5	19
C00120800	8	14,5	21
C00121000	10	17,5	23
C00121200	12	19,5	25
C00121600	16	24	25

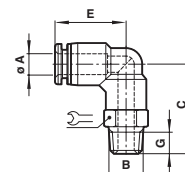
PNEUFIT C COMPOSITE FITTINGS

Metric Ø 3 to 16 mm O/D tube



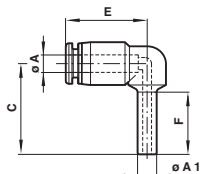
Union Elbow

Model No.	O/D Tube (ØA)	ØD	E	H	O
C00400400	4	3,3	19	8,5	10,5
C00400600	6	3,3	21	7,5	12,5
C00400800	8	4,3	22,5	9	14,5
C00401000	10	4,3	26	12	18
C00401200	12	4,3	30	13,5	21
C00401600	16	4,3	34	16	25,5



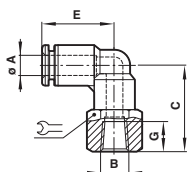
90° Swivel Elbow Adaptor

Model No.	O/D Tube (ØA)	BSPT Thread (B)	C	E	G	Wrench
C01470418	4	R1/8	24,5	18,5	8	10
C01470428	4	R1/4	26,5	18,5	10	14
C01470438	4	R3/8	27,5	18,5	11	17
C01470618	6	R1/8	26,5	20,5	8	12
C01470628	6	R1/4	29,5	20,5	10	14
C01470638	6	R3/8	30,5	20,5	11	17
C01470648	6	R1/2	33,5	20,5	14	21
C01470818	8	R1/8	28	23	8	14
C01470828	8	R1/4	31	23	10	14
C01470838	8	R3/8	32	23	11	17
C01470848	8	R1/2	35	23	14	21
C01471018	10	R1/8	28,5	23,5	8	17
C01471028	10	R1/4	31,5	23,5	10	17
C01471038	10	R3/8	32,5	23,5	11	17
C01471048	10	R1/2	35,5	23,5	14	21
C01471218	12	R1/8	32,5	27,5	8	19
C01471228	12	R1/4	34,5	27,5	10	19
C01471238	12	R3/8	35,5	27,5	11	19
C01471248	12	R1/2	38,5	27,5	14	21
C01471638	16	R3/8	43	32,5	11	24
C01471648	16	R1/2	46	32,5	14	24



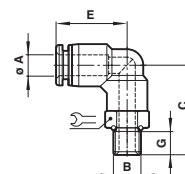
Stem Elbow

Model No.	O/D Tube (ØA)	O/D Stem (ØA1)	C	E	F
C00430400	4	4	28,5	19	22
C00430600	6	6	31,5	20,5	24
C00430800	8	8	34,5	23	26
C00431000	10	10	38	24	28
C00431200	12	12	41	28	30
C00431600	16	16	48,5	32	35



90° Swivel Elbow Adaptor (female)

Model No.	O/D Tube (ØA)	Metric & BSPT Thread (B)	C	E	G	Wrench
C02480405	4	M5	21,5	18,5	4,5	10
C02480406	4	M6	21,5	18,5	4,5	10
C01480418	4	R1/8	22,5	18,5	9	14
C01480428	4	R1/4	24,5	18,5	11	17
C02480605	6	M5	23,5	20,5	4,5	12
C02480606	6	M6	23,5	20,5	4,5	12
C01480618	6	R1/8	24,5	20,5	9	14
C01480628	6	R1/4	26,5	20,5	11	17
C01480638	6	R3/8	27,5	20,5	12	22
C01480818	8	R1/8	26	23	9	14
C01480828	8	R1/4	28	23	11	17
C01480838	8	R3/8	29	23	12	22
C01481028	10	R1/4	28,5	23,5	11	17
C01481038	10	R3/8	29,5	23,5	12	22
C01481048	10	R1/2	31,5	23,5	14	24
C01481228	12	R1/4	31,5	27,5	11	19
C01481238	12	R3/8	32,5	27,5	12	22
C01481248	12	R1/2	34,5	27,5	14	24

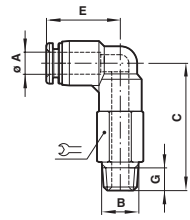


90° Swivel Elbow Adaptor

Model No.	O/D Tube (ØA)	BSPP Thread (B)	C	E	G	Wrench
C02470405	4	M5	22	18,5	4,5	10
C02470406	4	M6	22	18,5	4,5	10
C02470418	4	G1/8	22,5	18,5	6	14
C02470428	4	G1/4	24,5	18,5	8	17
C02470438	4	G3/8	24,5	18,5	8	20
C02470605	6	M5	24	20,5	4,5	12
C02470606	6	M6	24	20,5	4,5	12
C02470618	6	G1/8	24,5	20,5	6	14
C02470628	6	G1/4	26,5	20,5	8	17
C02470638	6	G3/8	26,5	20,5	9	20
C02470818	8	G1/8	26	23	8	14
C02470828	8	G1/4	28	23	8	17
C02470838	8	G3/8	28	23	9	20
C02470848	8	G1/2	29	23	10	24
C02471018	10	G1/8	26,5	23,5	6	17
C02471028	10	G1/4	28,5	23,5	8	17
C02471038	10	G3/8	28,5	23,5	9	20
C02471048	10	G1/2	29,5	23,5	10	24
C02471228	12	G1/4	32,5	27,5	8	19
C02471238	12	G3/8	32,5	27,5	9	20
C02471248	12	G1/2	32,5	27,5	10	24
C02471638	16	G3/8	41	32,5	9	24
C02471648	16	G1/2	42	32,5	10	24

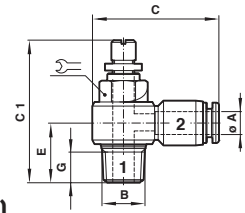
PNEUFIT C COMPOSITE FITTINGS

Metric Ø 3 to 16 mm O/D tube



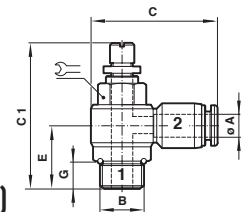
90° Swivel Elbow Adaptor (extended)

Model No.	O/D Tube (ØA)	Metric & BSPT Thread (B)	C	E	G	
C02540405	4	M5	33,5	18,5	4,6	10
C02540406	4	M6	33	18,5	4,6	10
C01540418	4	R1/8	35,5	18,5	8	10
C01540428	4	R1/4	37,5	18,5	10	14
C01540438	4	R3/8	38,5	18,5	11	17
C02540605	6	M5	38	20,5	4,5	12
C02540606	6	M6	37,5	20,5	4,5	12
C01540618	6	R1/8	40	20,5	8	12
C01540628	6	R1/4	42	20,5	10	14
C01540638	6	R3/8	43	20,5	11	17
C01540648	6	R1/2	46	20,5	14	21
C01540818	8	R1/8	44	23	8	14
C01540828	8	R1/4	46	23	10	14
C01540838	8	R3/8	47	23	11	17
C01540848	8	R1/2	50	23	14	21
C01541018	10	R1/8	47,5	23,5	8	17
C01541028	10	R1/4	49,5	23,5	10	17
C01541038	10	R3/8	50,5	23,5	11	17
C01541048	10	R1/2	53,5	23,5	14	21
C01541218	12	R1/8	54	27,5	8	19
C01541228	12	R1/4	56	27,5	10	19
C01541238	12	R3/8	57	27,5	11	19
C01541248	12	R1/2	60	27,5	14	21
C01541638	16	R3/8	69	32,5	11	24
C01541648	16	R1/2	72	32,5	14	24



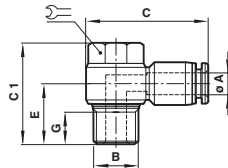
Banjo Flow Control (out)

Model No.	O/D Tube (ØA)	BSPT Thread (B)	C	C1 min.	C1 max.	E	G	
C0TA00418	4	R1/8	30,5	35	40	14,5	8	11
C0TA00428	4	R1/4	34,5	40	45,5	18	10	15
C0TA00618	6	R1/8	31	35	31	14,5	8	11
C0TA00628	6	R1/4	35	40	45,5	18	10	15
C0TA00638	6	R3/8	38,5	46,5	55	21	11	19
C0TA00818	8	R1/8	33	35	40	15,5	8	11
C0TA00828	8	R1/4	37	40	45,5	19	10	15
C0TA00838	8	R3/8	40	46,5	55	21	11	19
C0TA00848	8	R1/2	46	53	60	25	14	24
C0TA01028	10	R1/4	39	40	45,5	20	10	15
C0TA01038	10	R3/8	42	46,5	55	22,5	11	19
C0TA01048	10	R1/2	47,5	53	60	25	14	24
C0TA01228	12	R1/4	41	40	45,5	22	10	15
C0TA01238	12	R3/8	46	46,5	55	23	11	19
C0TA01248	12	R1/2	50	53	60	27	14	24



Banjo Flow Control (out)

Model No.	O/D Tube (ØA)	Metric & BSPP Thread (B)	C	C1 min.	C1 max.	E	G	
C0K510305	3	M5	21,5	27	30	9,5	3,5	8
C0K510405	4	M5	25	27	30	10	3,5	8
C0K510418	4	G1/8	30,5	35	40	15	6	8
C0K510428	4	G1/4	34,5	40	45,5	17	8	12
C0K510605	6	M5	28	27	30	11	3,5	8
C0K510618	6	G1/8	31	35	40	15	6	8
C0K510628	6	G1/4	35	40	45,5	17	8	12
C0K510638	6	G3/8	38,5	46,5	55	21	8	14
C0K510818	8	G1/8	33	35	40	14	6	8
C0K510828	8	G1/4	37	40	45,5	16	8	12
C0K510838	8	G3/8	40	46,5	55	21	8	14
C0K510848	8	G1/2	46	53	60	22,5	9	17
C0K511028	10	G1/4	39	40	45,5	18	8	12
C0K511038	10	G3/8	42	46,5	55	19,5	8	14
C0K511048	10	G1/2	47,5	53	60	22,5	9	17
C0K511228	12	G1/4	41	40	45,5	20	8	12
C0K511238	12	G3/8	46	46,5	55	19	8	14
C0K511248	12	G1/2	50	53	60	21	9	17

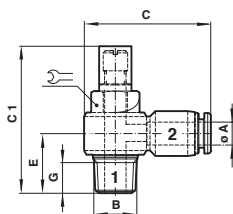


Banjo

Model No.	O/D Tube (ØA)	Metric & BSPP Thread (B)	C	C1	E	G	
C0A510405	4	M5	25	18	10	3,5	8
C0A510418	4	G1/8	30,5	25	14,5	11	8
C0A510428	4	G1/4	34,5	29	16,5	10	12
C0A510605	6	M5	18	28	11	3,5	8
C0A510618	6	G1/8	31	25	14,5	8	8
C0A510628	6	G1/4	35	29	16,5	10	12
C0A510638	6	G3/8	38,5	32,5	20,5	11	14
C0A510818	8	G1/8	33	25	13,5	8	8
C0A510828	8	G1/4	37	29	16	10	12
C0A510838	8	G3/8	40	32,5	20,5	11	14
C0A510848	8	G1/2	46	39,5	23	14	17
C0A511028	10	G1/4	39	29	15,5	10	12
C0A511038	10	G3/8	42	32,5	19,5	11	14
C0A511048	10	G1/2	47,5	39,5	23	14	17
C0A511238	12	G3/8	46	32,5	18,5	11	14
C0A511248	12	G1/2	50	39,5	21,5	14	17

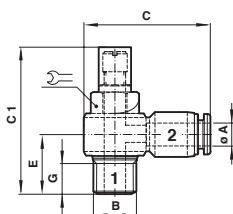
PNEUFIT C COMPOSITE FITTINGS

Metric Ø 3 to 16 mm O/D tube



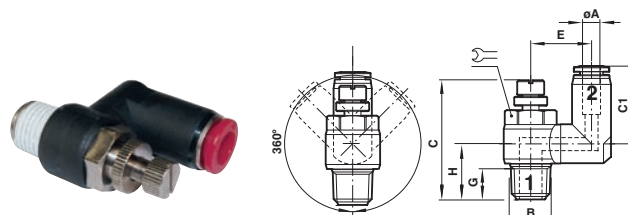
Shrouded Banjo (out)

Model No.	O/D Tube (ØA)	BSPT Thread (B)	C	C1	E	G	
COTB00418	4	R1/8	30,5	31,5	15	8	11
COTB00428	4	R1/4	34,5	37	18,5	10	15
COTB00618	6	R1/8	31	31,5	15	8	11
COTB00628	6	R1/4	35	37	18,5	10	15
COTB00638	6	R3/8	38,5	43,5	22	11	19
COTB00818	8	R1/8	33	31,5	16,5	8	11
COTB00828	8	R1/4	37	37	19,5	10	15
COTB00838	8	R3/8	40	43,5	22	11	19
COTB00848	8	R1/2	46	50	26,5	14	24
COTB01028	10	R1/4	39	37	21	10	15
COTB01038	10	R3/8	42	43,5	23,5	11	19
COTB01048	10	R1/2	47,5	50	26,5	14	24
COTB01228	12	R1/4	41	37	22,5	10	15
COTB01238	12	R3/8	46	43,5	24	11	19
COTB01248	12	R1/2	50	50	28	14	24



Swivel Banjo Flow Control (out)

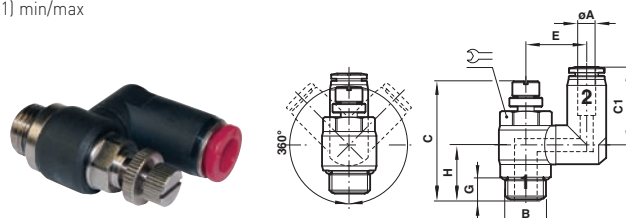
Model No.	O/D Tube (ØA)	Metric & BSPP Thread (B)	C	C1	E	G	
COKB00405	4	M5	25	23	10,5	3,5	8
COKB00418	4	G1/8	30,5	31,5	15	6	8
COKB00428	4	G1/4	34,5	37	17,5	8	12
COKB00605	6	M5	28	23	11,5	3,5	8
COKB00618	6	G1/8	31	31,5	15	6	8
COKB00628	6	G1/4	35	37	17,5	8	12
COKB00638	6	G3/8	38,5	43,5	21	8	14
COKB00818	8	G1/8	33	31,5	14	6	8
COKB00828	8	G1/4	37	37	17	8	12
COKB00838	8	G3/8	40	43,5	21	8	14
COKB00848	8	G1/2	46	50	23	9	17
COKB01028	10	G1/4	39	37	19	8	12
COKB01038	10	G3/8	42	43,5	20	8	14
COKB01048	10	G1/2	47,5	50	23	9	17
COKB01228	12	G1/4	41	37	20,5	8	12
COKB01238	12	G3/8	46	43,5	19	8	14
COKB01248	12	G1/2	50	50	21,5	9	17



Swivel Banjo Flow Control (out)

Model No.	O/D Tube (ØA)	BSPT Thread (B)	C *1)	C1	E	G	H	
COT560418	4	R1/8	35/40	20,5	14,5	8	15	11
COT560428	4	R1/4	40/45,5	20,5	18	10	18,5	15
COT560618	6	R1/8	35/40	24	15,5	8	15	11
COT560628	6	R1/4	40/45,5	26	20,5	10	18,5	15
COT560638	6	R3/8	47/55	26	23,5	11	21,5	19
COT560818	8	R1/8	35/40	25,5	16	8	15,5	11
COT560828	8	R1/4	40/45,5	29	19,5	10	18,5	15
COT560838	8	R3/8	47/55	30	24,5	11	22	19
COT561028	8	R1/2	53/60	30	26,5	14	26	24
COT561038	10	R1/4	40/45,5	31	20,5	10	18,5	15
COT561048	10	R3/8	47/55	32	24,5	11	22	19
COT561048	10	R1/2	53/60	33	26,5	14	26,5	24
COT561228	12	R1/4	40/45,5	33,5	22	10	18,5	15
COT561238	12	R3/8	47/55	34,5	24,5	11	22	19
COT561248	12	R1/2	53/60	36	26,5	14	26,5	24

*1) min/max



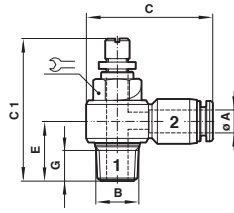
Swivel Banjo Flow Control (out)

Model No.	O/D Tube (ØA)	Metric & BSPP Thread (B)	C *1)	C1	E	G	H	
COK560405	4	M5	27/30	20,5	12,5	3,6	9,5	8
COK560418	4	G1/8	35/40	20,5	14,5	8	15,5	8
COK560428	4	G1/4	40/45,5	20,5	18	12	17,5	12
COK560605	6	M5	27/30	22,5	13,5	3,6	9,5	8
COK560618	6	G1/8	35/40	24	15,5	8	15,5	8
COK560628	6	G1/4	40/45,5	26	20,5	12	17,5	12
COK560638	6	G3/8	47/55	26	23,5	14	21,5	14
COK560818	8	G1/8	35/40	25,5	16	8	14,5	8
COK560828	8	G1/4	40/45,5	28,8	19,5	12	17,5	12
COK560838	8	G3/8	47/55	30	24,5	14	21	14
COK561028	8	G1/2	53/60	30	26,5	17	23	17
COK561038	10	G1/4	40/45,5	31	20,5	12	17,5	12
COK561048	10	G3/8	47/55	32	24,5	14	21	14
COK561048	10	G1/2	53/60	33	26,5	17	23	17
COK561228	12	G1/4	40/45,5	33,5	22	12	17,5	12
COK561238	12	G3/8	47/55	34,5	24,5	14	21	14
COK561248	12	G1/2	53/60	36	26,5	17	23	17

*1) min/max

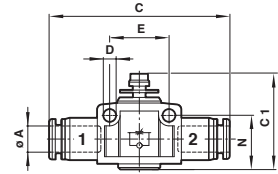
PNEUFIT C COMPOSITE FITTINGS

Metric Ø 3 to 16 mm O/D tube



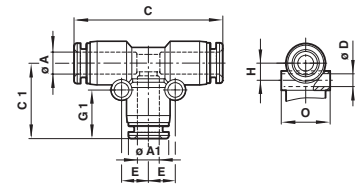
Banjo Flow Control (in)

Model No.	O/D Tube (ØA)	BSPT Thread (B)	C	C1 min.	C1 max.	E	G	
COSA00418	4	R1/8	30,5	35	40	14,5	8	11
COSA00428	4	R1/4	34,5	40	45,5	18	10	15
COSA00618	6	R1/8	31	35	40	14,5	8	11
COSA00628	6	R1/4	35	40	45,5	18	10	15
COSA00638	6	R3/8	39	46,5	55	21	11	19
COSA00818	8	R1/8	33	35	40	15,5	8	11
COSA00828	8	R1/4	37	40	45,5	19	10	15
COSA00838	8	R3/8	40	46,5	55	21	11	19
COSA00848	8	R1/2	46	53	60	25	14	24
COSA01028	10	R1/4	39	40	45,5	20	10	15
COSA01038	10	R3/8	42	46,5	55	22,5	11	19
COSA01048	10	R1/2	47,5	53	60	25	14	24
COSA01228	12	R1/4	41	40	45,5	22	10	15
COSA01238	12	R3/8	46	46,5	55	23	11	19
COSA01248	12	R1/2	50	53	60	27	14	24



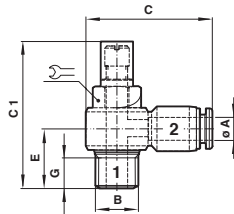
In-Line Flow Control

Model No.	O/D Tube (ØA)	C	C1 min.	C1 max.	D	E	N
C00GE0400	4	45	30	33	3,3	15	13,5
C00GE0600	6	50	35	39,5	4,4	20,5	17,5
C00GE0800	8	55,5	37,5	42	4,4	23	20
C00GE1000	10	61	44	49	4,4	28	23
C00GE1200	12	70	47,5	53,5	4,4	32	25,5



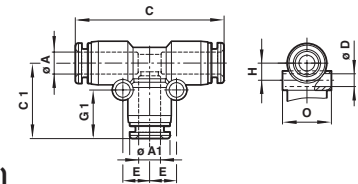
Union Tee

Model No.	O/D Tube (ØA)	ØA1	C	C1	ØD	E	G1	H	Ø
C00600400	4	4	36,5	19	3,3	6,5	12,5	8,5	10,5
C00600600	6	6	42	21,5	3,3	7,5	13,5	7,5	12,5
C00600800	8	8	45	23,5	4,3	9	15	9	14,5
C00601000	10	10	48	25,5	4,3	10	15,5	11	17,5
C00601200	12	12	57	29,5	4,3	13	16,5	12,5	20,5
C00601600	16	16	68	34,5	4,3	16	18	16	25,5



Banjo Flow Control (in)

Model No.	O/D Tube (ØA)	Metric & BSPP Thread (B)	C	C1 min.	C1 max.	E	G	
COL510305	3	M5	21,5	27	30	9,5	3,5	8
COL510405	4	M5	25	27	30	10	3,5	8
COL510418	4	G1/8	30,5	35	40	15	6	8
COL510428	4	G1/4	34,5	40	45,5	17	8	12
COL510605	6	M5	28	27	30	11	3,5	8
COL510618	6	G1/8	31	35	40	15	6	8
COL510628	6	G1/4	35	40	45,5	17	8	12
COL510638	6	G3/8	39	46,5	55	21	8	14
COL510818	8	G1/8	33	35	40	14	6	8
COL510828	8	G1/4	37	40	45,5	16	8	12
COL510838	8	G3/8	40	46,5	55	21	8	14
COL510848	8	G1/2	46	53	60	22,5	9	17
COL511028	10	G1/4	39	40	45,5	18	8	12
COL511038	10	G3/8	42	46,5	55	19,5	8	14
COL511048	10	G1/2	47,5	53	60	22,5	9	17
COL511228	12	G1/4	41	40	45,5	20	8	12
COL511238	12	G3/8	46	46,5	55	19	8	14
COL511248	12	G1/2	50	53	60	21	9	17

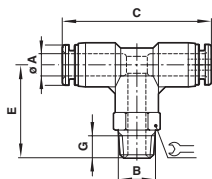


Union Tee (unequal)

Model No.	O/D Tube (ØA)	ØA1	C	C1	ØD	E	G1	H	Ø
C006A0604	6	4	41,5	19	3,3	7	12,5	8	12,5
C006A0806	8	6	45	22	4,3	8,5	13,5	9,5	15
C006A1006	10	6	49	23	4,3	8,5	13,5	11	17,5
C006A1008	10	8	49	25	4,3	9,5	15	11	17,5
C006A1208	12	8	56	25,5	4,3	9,5	15	12,5	20,5
C006A1210	12	10	56	27,5	4,3	11	15,5	12,5	20,5
C006A1610	16	10	61	30,5	4,3	11,5	15,5	16	25,5
C006A1612	16	12	63,5	33	4,3	13	16,5	16	25,5

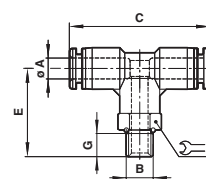
PNEUFIT C COMPOSITE FITTINGS

Metric Ø 3 to 16 mm O/D tube



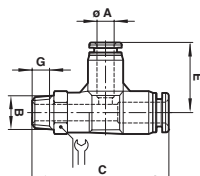
Swivel Tee Adaptor

Model No.	O/D Tube (ØA)	BSPT Thread (B)	C	E	G	
C01670418	4	R1/8	37,5	24,5	8	10
C01670428	4	R1/4	37,5	26,5	10	14
C01670438	4	R3/8	37,5	27,5	11	17
C01670618	6	R1/8	41	26,5	8	12
C01670628	6	R1/4	41	29,5	10	14
C01670638	6	R3/8	41	30,5	11	17
C01670648	6	R1/2	41	33,5	14	21
C01670818	8	R1/8	44	28	8	14
C01670828	8	R1/4	44	31	10	14
C01670838	8	R3/8	44	32	11	17
C01670848	8	R1/2	44	35	14	21
C01671018	10	R1/8	47	28,5	8	17
C01671028	10	R1/4	47	32	10	17
C01671038	10	R3/8	47	32,5	11	17
C01671048	10	R1/2	47	35,5	14	21
C01671218	12	R1/8	55	32,5	8	19
C01671228	12	R1/4	55	34,5	10	19
C01671238	12	R3/8	55	35,5	11	19
C01671248	12	R1/2	55	38,5	14	21
C01671638	16	R3/8	64,5	43	11	24
C01671648	16	R1/2	64,5	46	14	24



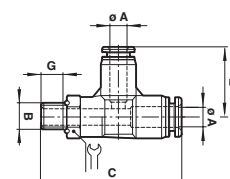
Swivel Tee Adaptor

Model No.	O/D Tube (ØA)	Metric & BSPP Thread (B)	C	E	G	
C02670405	4	M5	37,5	22	4,5	10
C02670406	4	M6	37,5	22	4,5	10
C02670418	4	G1/8	37,5	22	6	14
C02670428	4	G1/4	37,5	24	8	17
C02670438	4	G3/8	37,5	24	8	20
C02670605	6	M5	41	24	4,5	12
C02670606	6	M6	41	24	4,5	12
C02670618	6	G1/8	41	24,5	6	14
C02670628	6	G1/4	41	26,5	8	17
C02670638	6	G3/8	41	27,5	9	20
C02670648	6	G1/2	41	28,5	9	24
C02670818	8	G1/8	44,5	26	6	14
C02670828	8	G1/4	44,5	28	8	17
C02670838	8	G3/8	44,5	29	9	20
C02670848	8	G1/2	44,5	30	10	24
C02671018	10	G1/8	47	26,5	6	17
C02671028	10	G1/4	47	28,5	8	17
C02671038	10	G3/8	47	29,5	9	20
C02671048	10	G1/2	47	30,5	10	24
C02671228	12	G1/4	55	31,5	8	19
C02671238	12	G3/8	55	32,5	9	20
C02671248	12	G1/2	55	33,5	10	24
C02671638	16	G3/8	64,5	40	9	24
C02671648	16	G1/2	64,5	41	10	24



Swivel Side Tee Adaptor

Model No.	O/D Tube (ØA)	BSPT Thread (B)	C	E	G	
C01680418	4	R1/8	45	20	8	10
C01680428	4	R1/4	48	20	10	14
C01680438	4	R3/8	49	20	11	17
C01680618	6	R1/8	48,5	21,5	8	12
C01680628	6	R1/4	51	21,5	10	14
C01680638	6	R3/8	52	21,5	11	17
C01680648	6	R1/2	55	21,5	14	21
C01680818	8	R1/8	52	23,5	8	14
C01680828	8	R1/4	55	23,5	10	14
C01680838	8	R3/8	56	23,5	11	17
C01680848	8	R1/2	59	23,5	14	21
C01681018	10	R1/8	55,5	25,5	8	17
C01681028	10	R1/4	58,5	25,5	10	17
C01681038	10	R3/8	59,5	25,5	11	17
C01681048	10	R1/2	62,5	25,5	14	21
C01681218	12	R1/8	63	30	8	19
C01681228	12	R1/4	65	30	10	19
C01681238	12	R3/8	66	30	11	19
C01681248	12	R1/2	69	30	14	21

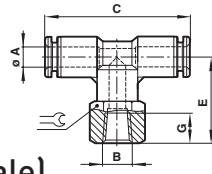


Swivel Side Tee Adaptor

Model No.	O/D Tube (ØA)	Metric & BSPP Thread (B)	C	E	G	
C02680405	4	M5	42	20	4,5	10
C02680406	4	M6	42	20	4,5	10
C02680418	4	G1/8	43	20	6	14
C02680428	4	G1/4	45	20	8	17
C02680438	4	G3/8	45	20	8	20
C02680605	6	M5	46	21,5	4,5	12
C02680606	6	M6	46	21,5	4,5	12
C02680618	6	G1/8	47	21,5	6	14
C02680628	6	G1/4	49	21,5	8	17
C02680638	6	G3/8	50	21,5	9	20
C02680818	8	G1/8	50	23,5	6	14
C02680828	8	G1/4	52	23,5	8	17
C02680838	8	G3/8	56	23,5	9	20
C02680848	8	G1/2	54	23,5	10	24
C02681018	10	G1/8	54	25,5	6	17
C02681028	10	G1/4	56	25,5	8	17
C02681038	10	G3/8	57	25,5	9	20
C02681048	10	G1/2	58	25,5	10	24
C02681228	12	G1/4	62	30	8	19
C02681238	12	G3/8	63	30	9	20
C02681248	12	G1/2	64	30	10	24

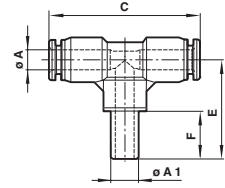
PNEUFIT C COMPOSITE FITTINGS

Metric Ø 3 to 16 mm O/D tube



Swivel Tee Adaptor (female)

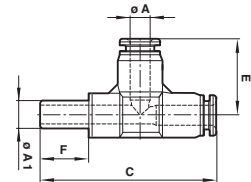
Model No.	O/D Tube (ØA)	Metric & BSPT Thread (B)	C	E	G	
C026C0405	4	M5	37,5	17	8	10
C026C0406	4	M6	37,5	17	8	10
C016C0418	4	R1/8	38	17	9	14
C016C0428	4	R1/4	38	17	11	17
C026C0605	6	M5	41	17,5	8	12
C026C0606	6	M6	41	17,5	8	12
C016C0618	6	R1/8	41	17,5	9	14
C016C0628	6	R1/4	41	17,5	11	17
C016C0638	6	R3/8	41	17,5	12	22
C016C0818	8	R1/8	44,5	18,5	9	14
C016C0828	8	R1/4	44,5	18,5	11	17
C016C0838	8	R3/8	44,5	18,5	12	22
C016C0848	8	R1/2	44,5	18,5	14	24
C016C1018	10	R1/8	47	19,5	9	17
C016C1028	10	R1/4	47	19,5	11	17
C016C1038	10	R3/8	47	19,5	12	22
C016C1048	10	R1/2	47	19,5	14	24
C016C1228	12	R1/4	55	22	11	19
C016C1238	12	R3/8	55	22	12	22
C016C1248	12	R1/2	55	22	14	24



Stem Tee

EQUAL					
Model No.	O/D Tube (ØA)	O/D Stem (ØA1)	C	E	F
C00630400	4	4	37,5	32,5	24
C00630600	6	6	41	34,5	25
C00630800	8	8	44,5	36	26
C00631000	10	10	47	37,5	28
C00631200	12	12	55	39	30

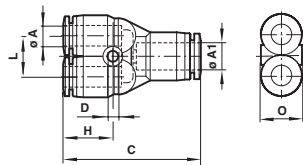
UNEQUAL					
Model No.	O/D Tube (ØA)	O/D Stem (ØA1)	C	E	F
C00630604	4	6	37,5	33,5	25
C00630806	6	8	41	35,5	28
C00631008	8	10	44,5	38,5	28
C00631210	10	12	47	39,5	30



Stem Side Tee

EQUAL					
Model No.	O/D Tube (ØA)	O/D Stem (ØA1)	C	E	F
C00640400	4	4	58	20,5	17
C00640600	6	6	52,5	21,5	17,5
C00640800	8	8	67	23,5	18,5
C00641000	10	10	73	25,5	19,5
C00641200	12	12	82	30	22

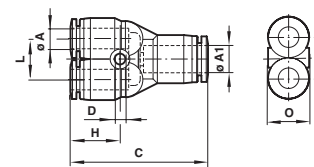
UNEQUAL					
Model No.	O/D Tube (ØA)	O/D Stem (ØA1)	C	E	F
C00640604	4	6	59	20	17
C00640806	6	8	63,5	21,5	17,5
C00641008	8	10	69,5	23,5	18,5
C00641210	10	12	75	25,5	19,5



Union Y

EQUAL							
Model No.	O/D Tube (ØA)	ØA1	C	D	H	L	O
C00820400	4	4	37	3,3	14,5	10,5	10,5
C00820600	6	6	40	3,3	16,5	12,5	12,5
C00820800	8	8	43	4,3	18,5	14,5	14,5
C00821000	10	10	47,5	4,3	19	17,5	17,5
C00821200	12	12	53	4,3	22	20,5	20,5

UNEQUAL							
Model No.	O/D Tube (ØA)	O/D Stem (ØA1)	C	D	H	L	O
C00820604	4	6	38	3,3	15	10,5	10,5
C00820804	4	8	39,5	3,3	15	10,5	15
C00821008	8	10	43	4,3	17	14,5	15
C00821210	10	12	46,5	4,3	18,5	17,5	18

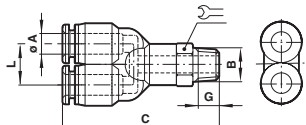


Y Connector


Model No.	O/D Tube (ØA)	O/D Stem (ØA1)	C	D	H	L	O
C00820804	4	8	39,5	3,3	15	10,5	15
C00821006	6	10	43	3,3	16,5	13	17,5
C00821208	8	12	48	3,3	17,5	15	21

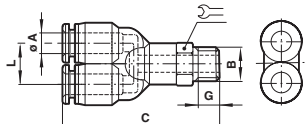
PNEUFIT C COMPOSITE FITTINGS

Metric Ø 3 to 16 mm O/D tube




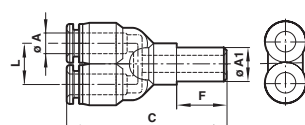
Swivel Y Adaptor

Model No.	O/D Tube (ØA)	BSPT Thread (B)	C	G	L	
C01880418	4	R1/8	41,5	8	10,5	10
C01880428	4	R1/4	42,5	10	10,5	14
C01880438	4	R3/8	43,5	11	10,5	17
C01880618	6	R1/8	44	8	12,5	12
C01880628	6	R1/4	47	10	12,5	14
C01880638	6	R3/8	48	11	12,5	17
C01880648	6	R1/2	51	14	12,5	21
C01880818	8	R1/8	45,5	8	14,5	14
C01880828	8	R1/4	48,5	10	14,5	14
C01880838	8	R3/8	48,5	11	14,5	17
C01880848	8	R1/2	52,5	14	14,5	21
C01881018	10	R1/8	49	8	17,5	17
C01881028	10	R1/4	52	10	17,5	17
C01881038	10	R3/8	53	11	17,5	17
C01881048	10	R1/2	56,2	14	17,5	21
C01881218	12	R1/8	52,5	3	20,5	19
C01881228	12	R1/4	54,5	8	20,5	19
C01881238	12	R3/8	55,5	11	20,5	19
C01881248	12	R1/2	58,5	14	20,5	21



Swivel Y Adaptor

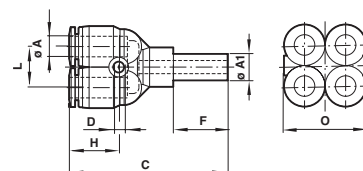
O/D Model No.	BSPP Tube (ØA)	Thread (B)	C	G	L	
C02880405	4	M5	35	4,5	10,5	10
C02880406	4	M6	35	4,5	10,5	10
C02880418	4	G1/8	41	6	10,5	14
C02880428	4	G1/4	43	8	10,5	17
C02880438	4	G3/8	43	8	10,5	20
C02880605	6	M5	41,5	4,5	12,5	12
C02880606	6	M6	41,5	4,5	12,5	12
C02880618	6	G1/8	42,5	6	12,5	14
C02880628	6	G1/4	44,5	8	12,5	17
C02880638	6	G3/8	45,5	9	12,5	20
C02880648	6	G1/2	46,5	10	12,5	24
C02880818	8	G1/8	43,5	6	14,5	14
C02880828	8	G1/4	45,5	8	14,5	17
C02880838	8	G3/8	46,5	9	14,5	20
C02880848	8	G1/2	47,5	10	14,5	24
C02881018	10	G1/8	49,5	6	17,5	17
C02881028	10	G1/4	51,5	8	17,5	17
C02881038	10	G3/8	52,5	9	17,5	20
C02881048	10	G1/2	53,5	10	17,5	24
C02881228	12	G1/4	55	8	20,5	19
C02881238	12	G3/8	56	9	20,5	20
C02881248	12	G1/2	57	10	20,5	24



Stem Y

EQUAL					
Model No.	O/D Tube (ØA)	O/D Stem (ØA1)	C	F	L
C00840400	4	4	49,5	22	10,5
C00840600	6	6	54,5	24	12,5
C00840800	8	8	60	26	14,5
C00841000	10	10	66	28	17,5
C00841200	12	12	71,5	30	20,5

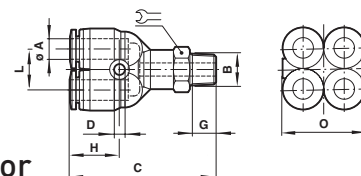
UNEQUAL					
Model No.	O/D Tube (ØA)	O/D Stem (ØA1)	C	F	L
C00840604	4	6	51,5	24	10,5
C00840806	6	8	56,5	26	12,5
C00841008	8	10	62	28	14,5
C00841210	10	12	68	30	17,5




Quadruple Reducer

Model No.	O/D Tube (ØA)	O/D Stem (ØA1)	C	ØD	F	H	L	O
C00970604	4	6	43,5	3,3	17	14	12,5	21
C00970806	6	8	48	3,3	19	15,5	14,5	25,5

Model No.	O/D Tube (ØA)	O/D Stem (ØA1)	C	ØD	H	L	O
C00960604	4	6	37	3,3	14	10,5	21
C00960806	6	8	40,5	3,3	15,5	12,5	25,5

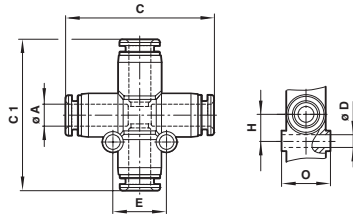


Quadruple Y Adaptor

Model No.	O/D Tube (ØA)	Metric & BSPT Thread (B)	C	ØD	G	H	L	O	
C01950418	4	R1/8	44	3,3	8	14	10,5	21	12
C01950428	4	R1/4	48	3,3	10	14	10,5	21	14
C01950618	6	R1/8	48	3,3	8	15,5	12,5	25,5	14
C01950628	6	R1/4	51	3,3	10	15,5	12,5	25,5	14
C02950418	4	G1/8	46	3,3	5	14	10,5	21	14
C02950428	4	G1/4	49	3,3	6,5	14	10,5	21	17
C02950618	6	G1/8	49	3,3	6,5	15,5	12,5	25,5	14
C02950628	6	G1/4	52	3,3	8	15,5	12,5	25,5	17

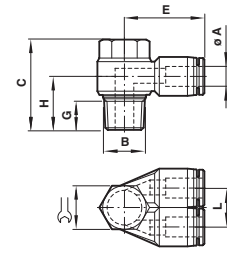
PNEUFIT C COMPOSITE FITTINGS

Metric Ø 3 to 16 mm O/D tube



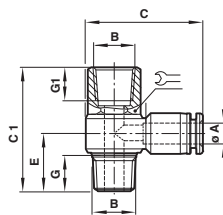
Union Cross

Model No.	O/D Tube (ØA)	C	C1	ØD	E	H	O
C00900400	4	36,5	38	3,3	13	6,5	10,5
C00900600	6	42	42,5	4,3	15	7,5	12,5
C00900800	8	45	47	4,3	18	9	14,5
C00901000	10	48	50,5	4,3	20	10	17,5
C00901200	12	55	57	4,3	24	12	20,5



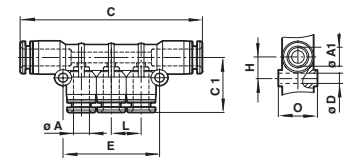
Twin Banjo

Model No.	O/D Tube (ØA)	Metric & BSPP Thread (B)	C	E	G	H	L
CON700618	6	R1/8	25	23	8	14,5	12,5
CON700828	8	R1/4	29	28,5	10	18,5	15
CON701028	10	R1/4	29	31	10	19,5	17,5
CON701038	10	R3/8	32,5	31	11	20,5	17,5
CON701238	12	R3/8	32,5	36	11	22	20,5
CON701248	12	R1/2	39,5	36,5	14	25,5	20,5
COA700405	4	M5	18	19,5	3,6	10	10,5
COA700618	6	G1/8	23,5	23	4,5	14	12,5
COA700828	8	G1/4	28	28,5	6	17,5	15
COA701028	10	G1/4	28	31	6	19	17,5
COA701038	10	G3/8	32,5	31	6	21	17,5
COA701238	12	G3/8	32,5	36	6	22,5	20,5
COA701248	12	G1/2	34	36,5	7,5	23	20,5



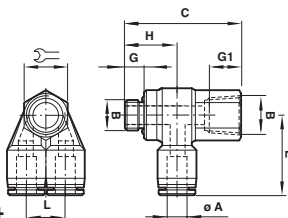
Banjo with Top Port

Model No.	O/D Tube (ØA)	Metric & BSPP Thread (B)	C	C1	E	G	G1
C0D510405	4	M5	25	20	10	3,5	6
C0E510418	4	R1/8	30,5	30	14,5	9	8
C0F510428	4	R1/4	34,5	35,5	18	11	10
C0D510605	6	M5	28	20	11	3,5	6
C0E510618	6	R1/8	31	30	14,5	9	8
C0F510628	6	R1/4	35	35,5	18	11	10
C0G510638	6	R3/8	38,5	41	21	12	11
C0E510818	8	R1/8	33	30	15,5	9	8
C0F510828	8	R1/4	38	35,5	19	11	10
C0G510838	8	R3/8	40	41	21	12	11
C0F511028	10	R1/4	39	35,5	20	11	10
C0G511038	10	R3/8	42	41	22,5	12	11
C0G511238	12	R3/8	46	41	23	12	11



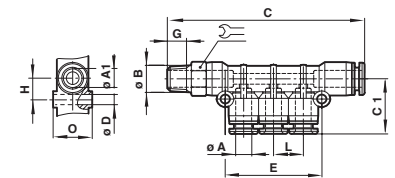
Manifold Union

Model No.	O/D Tube Outlet (ØA)	O/D Tube Inlet (ØA1)	C	C1	D	E	H	L	O
C00D30604	4	6	63,5	18	3,3	34	7,5	10,5	12,5
C00D30804	4	8	65,5	21,5	4,3	35	9	10,5	14,5
C00D30806	6	8	71,5	22,5	4,3	41	9,5	12,5	14,5
C00D31006	6	10	78	23,5	4,3	42	9,5	12,5	17,5
C00D31008	8	10	83,5	26	4,3	47	9,5	14,5	17,5



Twin Banjo with Top Port

Model No.	O/D Tube (ØA)	Metric & BSPP Thread (B)	C	E	G	G1	H	L
C0D7K0405	4	M5	20	19,5	3,5	7	10	10,5
C0E7K0618	6	G1/8	30	23	8	8	14	12,5
C0F7K0828	8	G1/4	35,5	27	10	10	17,5	14,5
C0F7K1028	10	G1/4	35,5	28	10	10	17,5	17,5
C0G7K1038	10	G3/8	41	30	11	11	17,5	17,5
C0G7K1238	12	G3/8	41	33	11	11	17,5	20,5
C0H7K1248	12	G1/2	50	35	14	14	20	20,5
C0E7J0618	6	R1/8	30	23	8	8	14,5	12,5
C0F7J0828	8	R1/4	35,5	28,5	10	10	18,5	15
C0F7J1028	10	R1/4	35,5	31	10	10	19,5	17,5
C0G7J1038	10	R3/8	41	31	11	11	20,5	17,5
C0G7J1238	12	R3/8	41	36	11	11	22	20,5
C0H7J1248	12	R1/2	50	36,5	14	14	25,5	20,5

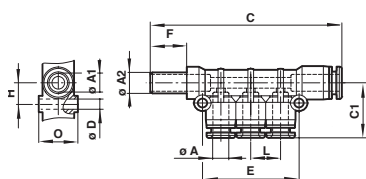


Adaptor Manifold

Model No.	O/D Tube (ØA)	O/D Stem (ØA1)	BSPT Thread (B)	C	C1	D	E	G	H	L	O
C01D30418	4	6	R1/8	72	24	3,3	34	8	7,5	10,5	12,5
C01D30428	4	8	R1/8	74	28,5	4,3	35	8	9	10,5	14,5
C01D30628	6	8	R1/4	82,5	34	4,3	41	10	9,5	12,5	14,5
C01D30838	8	10	R3/8	95	34,5	4,3	47	10	9,5	14,5	17,5

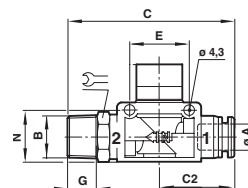
PNEUFIT C COMPOSITE FITTINGS

Metric Ø 3 to 16 mm O/D tube



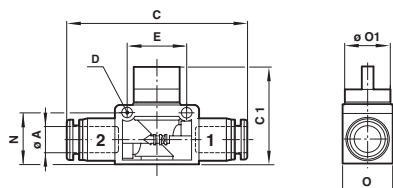
Stem Manifold

Model No.	O/D Tube (ØA)	O/D Stem (ØA1)	ØA2	C	C1	ØD	E	F	H	L	O
C00J30604	4	6	6	84,5	24	3,3	34	25	7,5	10,5	12,5
C00J30804	4	8	8	89,5	28,5	4,3	35	28,5	9	10,5	14,5
C00J30806	6	8	8	95,5	34	4,3	41	28,5	9,5	12,5	14,5
C00J31008	8	10	10	109,5	34,5	4,3	47	31	9,5	14,5	17,5



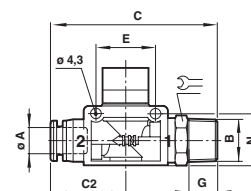
Hand Valve Tube to Thread

Model No.	O/D Tube (ØA)	BSPT Thread (B)	C	C1	C2	E	G	N	O	O1	
C01GH0618	6	R1/8	62	40,5	26	19	8	18,5	18	16,5	14
C01GH0628	6	R1/4	65	40,5	26	19	10	18,5	18	16,5	14
C01GH0638	6	R3/8	66	40,5	26	19	11	18,5	18	16,5	17
C01GH0818	8	R1/8	63	40,5	27,5	19	8	18,5	18	16,5	14
C01GH0828	8	R1/4	66	40,5	27,5	19	10	18,5	18	16,5	14
C01GH0838	8	R3/8	67	40,5	27,5	19	11	18,5	18	16,5	17
C01GH1028	10	R1/4	67	41	31	24	10	21,5	21	19,5	17
C01GH1038	10	R3/8	71,5	41	31	24	11	21,5	21	19,5	17
C01GH1048	10	R1/2	74,5	41	31	24	14	21,5	21	19,5	21
C01GH1228	12	R1/4	75,5	41	34	24	10	21,5	21	19,5	19
C01GH1238	12	R3/8	76,5	41	34	24	11	21,5	21	19,5	19
C01GH1248	12	R1/2	79,5	41	34	24	14	21,5	21	19,5	21



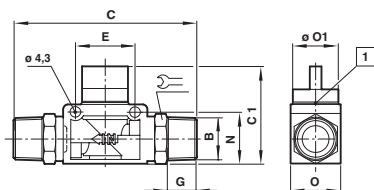
Hand Valve Tube to Tube

Model No.	O/D Tube (ØA)	C	C1	ØD	E	N	O	ØO1
C00GF0600	6	52,5	40,5	4,3	19	18,5	18	16,5
C00GF0800	8	53	40,5	4,3	19	18,5	18	16,5
C00GF1000	10	62	41	4,3	24	21,5	21	19,5
C00GF1200	12	68,5	41	4,3	24	21,5	21	19,5



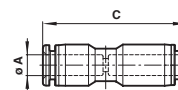
Hand Valve Thread to Tube

Model No.	O/D Tube (ØA)	BSPT Thread (B)	C	C1	C2	E	G	N	O	O1	
C01GJ0618	6	R1/8	62	40,5	26	19	8	18,5	18	16,5	14
C01GJ0628	6	R1/4	65	40,5	26	19	10	18,5	18	16,5	14
C01GJ0638	6	R3/8	66	40,5	26	19	11	18,5	18	16,5	17
C01GJ0818	8	R1/8	65	40,5	27,5	19	8	18,5	18	16,5	14
C01GJ0828	8	R1/4	66	40,5	27,5	19	10	18,5	18	16,5	14
C01GJ0838	8	R3/8	67	40,5	27,5	19	11	18,5	18	16,5	17
C01GJ1028	10	R1/4	70,5	41	31	24	10	21,5	21	19,5	17
C01GJ1038	10	R3/8	71,5	41	31	24	11	21,5	21	19,5	17
C01GJ1048	10	R1/2	74,5	41	31	24	14	21,5	21	19,5	21
C01GJ1228	12	R1/4	75,5	41	34	24	10	21,5	21	19,5	19
C01GJ1238	12	R3/8	76,5	41	34	24	11	21,5	21	19,5	19
C01GJ1248	12	R1/2	79,5	41	34	24	14	21,5	21	19,5	21



Hand Valve Thread to Thread

Model No.	BSPT Thread (B)	C	C1	E	G	N	O	O1	
C01GG1818	R1/8	71	40,5	19	8	18,5	18	16,5	14
C01GG2828	R1/4	77	40,5	19	10	18,5	18	16,5	14
C01GG3838	R3/8	81	41	24	11	21,5	21	19,5	17
C01GG4848	R1/2	90	41	24	14	21,5	21	19,5	21

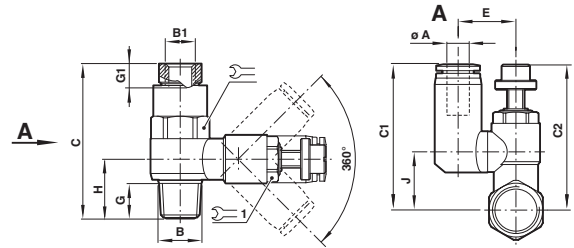


Union Straight Self-Seal

Model No.	O/D Tube (ØA)	C
C002J0400	4	42
C002J0600	6	46
C002J0800	8	53,5
C002J1000	10	58
C002J1200	12	67

PNEUFIT C COMPOSITE FITTINGS

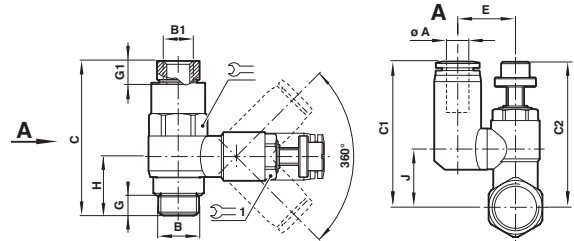
Metric Ø 3 to 16 mm O/D tube



Flow Control + Pilot Check

Model No.	O/D Tube (ØA)	BSPT Thread (B)	B1	C	C1	C2*	E	G	G1	H	J	Wrench	Wrench 1
C01GN0618	6	R1/8	M5	35,5	39	43,5/48,5	16	8	8,5	16,5	15	12	10
C01GN0628	6	R1/4	R1/8	42	44,5	55,5/60,5	19,5	10,5	8,5	18,5	18,5	17	13
C01GN0818	8	R1/8	M5	35,5	40	43,5/48,5	17,5	8	10	16,5	15	12	10
C01GN0828	8	R1/4	R1/8	42	46,5	55,5/60,5	18,5	10,5	8,5	18,5	18,5	17	13
C01GN0838	8	R3/8	R1/8	49,5	50,5	58,5/63,5	23,5	11,5	10	21,5	21,5	19	17
C01GN1038	10	R3/8	R1/8	49,5	53	58,5/63,5	23,5	11,5	10	21,5	21,5	19	17
C01GN1038	10	R1/2	R1/4	60	64,5	72/78	26,5	14,5	10	21,5	21,5	19	17
C01GN1238	12	R3/8	R1/8	49,5	55	58,5/63,5	23,5	11,5	10	21,5	21,5	19	17
C01GN1248	12	R1/2	R1/4	60	67	72/78	26,5	14,5	13,5	27,5	31,5	24	23

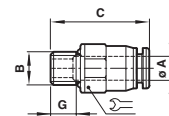
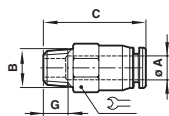
* min/max



Flow Control + Pilot Check

Model No.	O/D Tube (ØA)	BSPP Thread (B)	B1	C	C1	C2*	E	G	G1	H	J	Wrench	Wrench 1
C02GN0618	6	G1/8	M5	35,5	39	43,5/48,5	16	5	8,5	16,5	15	12	10
C02GN0628	6	G1/4	G1/8	42	44,5	55,5/60,5	19,5	6,5	9,5	18,5	18,5	17	13
C02GN0818	8	G1/8	M5	35,5	40	43,5/48,5	17,5	5	8,5	16,5	15	12	10
C02GN0828	8	G1/4	G1/8	42	46,5	55,5/60,5	18,5	6,5	9,5	18,5	18,5	17	13
C02GN0838	8	G3/8	G1/8	49,5	50,5	58,5/63,5	23,5	7	9,5	21,5	21,5	19	17
C02GN1038	10	G3/8	G1/8	49,5	53	58,5/63,5	23,5	7	9,5	21,5	21,5	19	17
C02GN1048	10	G1/2	G1/4	60	64,5	72/78	26,5	8,5	13	27,5	31,5	24	23
C02GN1238	12	G3/8	G1/8	49,5	55	58,5/63,5	23,5	7	9,5	21,5	21,5	19	17
C02GN1248	12	G1/2	G1/4	60	67	72/78	26,5	8,5	9,5	27,5	31,5	24	23

* min/max



Straight Self-Seal

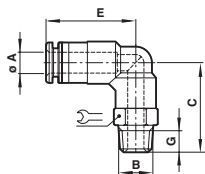
Model No.	O/D Tube (ØA)	BSPT Thread (B)	C	G	Wrench
C01240418	4	R1/8	26	8	10
C01240618	6	R1/8	29	8	12
C01240628	6	R1/4	29	10	14
C01240828	8	R1/4	33,5	10	14
C01240838	8	R3/8	33,5	11	17
C01241028	10	R1/4	35,5	10	17
C01241038	10	R3/8	35,5	11	17
C01241048	10	R1/2	35,5	14	21
C01241228	12	R1/4	42	10	19
C01241238	12	R3/8	42	11	19
C01241248	12	R1/2	42	14	21

Straight Self-Seal


Model No.	O/D Tube (ØA)	BSPP Thread (B)	C	G	Wrench
C02240418	4	G1/8	25,5	5	12
C02240618	6	G1/8	28	5	12
C02240628	6	G1/4	27	6,5	15
C02240828	8	G1/4	32	6,5	15
C02240838	8	G3/8	32	6,5	17
C02241028	10	G1/4	35	6,5	17
C02241038	10	G3/8	36,5	6,5	17
C02241048	10	G1/2	37,5	8	21
C02241228	12	G1/4	43,5	6,5	19
C02241238	12	G3/8	43,5	6,5	21
C02241248	12	G1/2	44	8	21

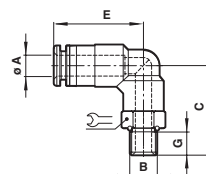
PNEUFIT C COMPOSITE FITTINGS

Metric Ø 3 to 16 mm O/D tube




Elbow Self-Seal

Model No.	O/D Tube (ØA)	BSPT Thread (B)	C	E	G	
C014J0418	4	R1/8	27	27,5	5	10
C014J0618	6	R1/8	30	32	5	12
C014J0628	8	R1/8	32	30,5	6,5	14
C014J0818	8	R1/4	34,5	41,5	6,5	14
C014J0828	8	R3/8	34	40	6,5	17
C014J1028	10	R1/4	32	26,5	6,5	17
C014J1038	10	R3/8	36	45	6,5	17
C014J1048	10	R1/2	37,5	43	8	21
C014J1238	12	R3/8	40	53,5	6,5	19
C014J1248	12	R1/2	41,5	51,5	8	21



Elbow Self-Seal

Model No.	O/D Tube (ØA)	Metric & BSPP Thread (B)	C	E	G	
C024J0405	4	M5	20,5	29,5	4	10
C024J0418	4	G1/8	27	27,5	5	14
C024J0605	6	M5	22,5	33	4	12
C024J0618	6	G1/8	30	32	5	14
C024J0628	8	G1/8	32	30,5	6,5	14
C024J0828	8	G1/4	34,5	41,5	6,5	17
C024J0838	8	G3/8	34	40	6,5	20
C024J1028	10	G1/4	32	26,5	6,5	17
C024J1038	10	G3/8	36	45	6,5	20
C024J1048	10	G1/2	37,5	43	8	24
C024J1238	12	G3/8	40	53,5	6,5	20
C024J1248	12	G1/2	41,5	51,5	8	24

EXPRESS PLUS

Pneufit C Fittings Box

6 and 8mm fittings in 21 of the most used shapes and sizes in a purpose built durable fittings box. Contact your Express Team.

