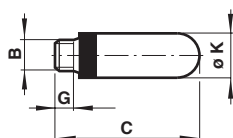


# SILENCERS



## Models

Model	BSPP (B)	C	G	ØK
M/S0	M5	23	4	6,5
M/S1	G1/8	34	6,5	12,5
M/S2	G1/4	42,5	8	15,5
M/S3	G3/8	67,5	11	18,5
M/S4	G1/2	77,5	11	23
M/S6	G3/4	131,5	15	38
M/S8	G1	162	20	49

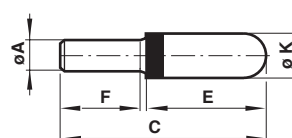
## POROUS PLASTIC SILENCERS M/S & T45

Reduce the noise levels of pneumatic equipment

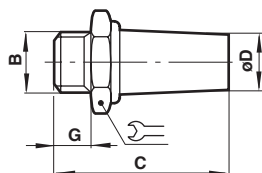
Compact, efficient and lightweight

Operating pressure is -1 to 10 bar

Operating temperature is -20°C to +80°C



Model No.	O/D Tube (ØA)	C	E	F	ØK
T45P0004	4	32	16	14	6,5
T45P0006	6	45	24,5	17	12,5
T45P0008	8	43,5	22	19	13,5
T45P0010	10	57,5	31	23	15,5
T45P0012	12	82	53	25	18,5



## Models

Model No.	BSPP (B)	C	ØD	G	Symbol
T40M0500	M5	20	5	5	7
T40C1800	G1/8	24	9,5	6	13
T40C2800	G1/4	33	12	8	17
T40C3800	G3/8	44	17	10	22
T40C4800	G1/2	56	20	12	27
T40C6800	G3/4	80	26	14	32
T40C8800	G1	82	31	16	41

## SINTERED BRONZE SILENCERS T40

Reduce the noise levels of pneumatic equipment

Compact and efficient

Operating pressure is 10 bar max.

Operating temperature is -20°C to +80°C

Model No.	BSPT (B)	C	ØD	G	Symbol
T40B1800	R1/8	27,5	9,5	9,5	13
T40B2800	R1/4	36	12	11	17
T40B3800	R3/8	46,5	17	12,5	22
T40B4800	R1/2	60	20	16	27
T40B6800	R3/4	85	26	19	32
T40B8800	R1	88,5	31	22,5	41

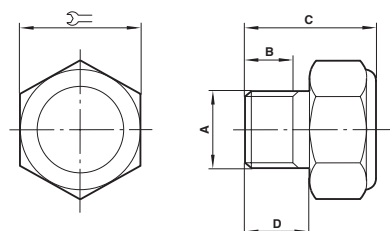
## EXHAUST FILTERS

Prevent the ingress of dirt with minimal flow restriction

Robust and compact

Operating pressure is 0 to 10 bar

Operating temperature is -20°C to +80°C



## Models

Model No.	A	B	C	D	Symbol
M/1511	G1/8	6	16	8	15
M/1512	G1/4	8	22	10	23,5
M/1514	G1/2	10,5	25	13	30,5
M/1516	G3/4	14	31	16	42,5
M/1518	G1	15	35	19	47

For further information  
[www.norgren.com/info/nec/en275](http://www.norgren.com/info/nec/en275)



## SILENCERS

### QUIETAIRE HEAVY DUTY SILENCERS MA & MB SERIES



Reduce the noise levels of pneumatic equipment  
Prevent open line exhaust dangers  
Corrosion resistant  
High flow capacity with low back pressure  
Brass mesh screen and aluminium construction provide improved flow, longer life and cleanable element  
Prevent metal chips, abrasive grits, dust and other contaminants from entering open exhaust ports

#### TECHNICAL DATA

##### Medium

Compressed air, filtered, lubricated and non-lubricated, inert gases

##### Operating pressure

-1 to 20 bar

##### Ambient temperature

-20°C to +80°C

##### Operation

Exhaust silencer

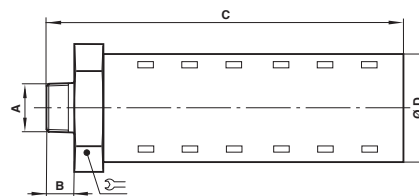
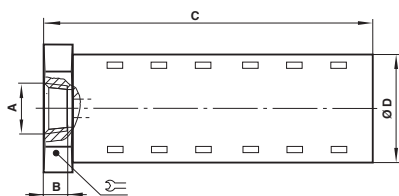
##### Mounting

Directly in the exhaust port



#### MATERIALS

Aluminium body and shell, brass mesh element



#### Models

FEMALE THREAD		Port Size (A)	B	C	ØD	
Model	BSPT					
MA001B		1/8	6	42	21	21
MA002B		1/4	9	45	21	21
MA003B		3/8	9	78	32	32
MA004B		1/2	12	83	32	32
MA006B		3/4	12	118	51	51
MA008B		1	15	118	51	51
	MA010C	1 1/4	15	144	64	64
	MA012C	1 1/2	15	144	64	64
	MA016C	2	16	168	76	76

MALE THREAD		Port Size (A)	B	C	ØD	
Model	BSPT					
MB001B		R1/8	9	51	21	21
MB002B		R1/4	13	55	21	21
MBP03B		R3/8	13	55	21	21
MB003B		R3/8	13	88	32	32
MB004B		R1/2	17	92	32	32
MBP06B		R3/4	17	92	32	32
MB006B		R3/4	20	134	51	51
MB008B		R1	23	138	51	51
MBP10B		R1 1/4	26	140	51	51

\*measured in dm<sup>3</sup>/[s.bar]



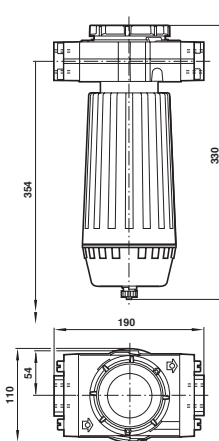
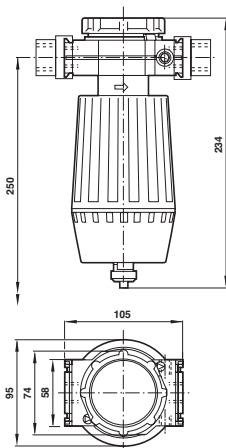
For further information  
[www.norgren.com/info/nec/en276](http://www.norgren.com/info/nec/en276)

## SILENCERS



CS13

CS15



## COALESCING EXHAUST SILENCERS

Easily replaceable cartridge element

Removal of oil mist from exhaust air provides cleaner work environment

Snap-on liquid sump with manual drain to collect coalesced oil

Assists in complying with Noise and COSHH regulations

Rugged, corrosion resistant construction

## TECHNICAL DATA

## Operating temperature:

CS13 and CS15 series: -20°C to 50°C

MQ series: -20°C to 100°C

## Working pressure range:

0 to 6 bar

## Residual oil:

< 0.1 mg/m<sup>3</sup> (1 bar 20°C)

## Noise reduction:

As low as 69dBa (dependant on application)

## Element replacement at:

2 bar pressure drop

## Models

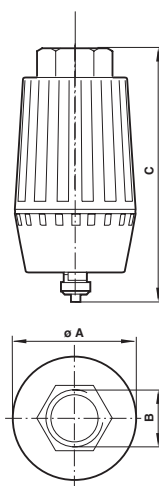
## Accessories

CS Series	Port size	Mounting bracket	Service kit	Replacement element
CS13-464-10GG	G1/2	74504-52	CS13RK	3236-01
CS13-664-10GG	G3/4	74504-52	CS13RK	3236-01
CS13-000-0000	Without Yoke	-	CS13RK	3236-01
CS15-800-10DD	G1	18-001-979	CS15RK	3237-01
CS15-000-0000	Without Yoke	-	CS15RK	3237-01

Service kit includes bowl, drain plug and drain retainer

## MQ0 Series

New range available from September 2009



## Models

## Accessories

MQ Series	Port size	Service kit	Replacement element
MQ004C	G1/2	CS13RK	3236-01
MQ006C	G3/4	CS13RK	3236-01
MQ008C	G1	CS15RK	3237-01

Service kit includes bowl, drain plug and drain retainer

Larger sizes of the MQ series are available – contact Norgren

## Dimensions

Model No.	ØA	B	C
MQ004C	90	G 1/2	181
MQ008C	110	G 1	254
MQ012C	110	G 1 1/2	312
MQ016C	110	G 2	312

For further information  
[www.norgren.com/info/nec/en277](http://www.norgren.com/info/nec/en277)

