

**Heavy duty silencer
1/8 to 2 inch**

Reduce the noise levels of pneumatic equipment
High flow capacity with low back pressure
Brass mesh screen and aluminium construction
provide improved flow, longer life and cleanable element

**Technical data**

Medium:
Compressed air, filtered, lubricated
and non-lubricated, inert gases

Operation:
Exhaust silencer

Operating pressure:
20 bar max.

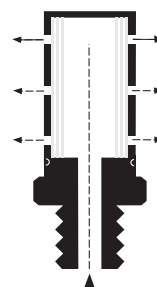
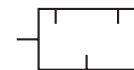
Operating temperature:
80°C max.

Materials:

Body: aluminium and shell,
Filter element: brass mesh

Ordering information

See page 2



General informationen

Male

Model	Port size	Model	Port size	Flow factor Cv *2)/(C *1)
MB001B	R1/8	MB001A	1/8 NPT	1,3 / 5,3
MB002B	R1/4	MB002A	1/4 NPT	2,3 / 9,4
MBP03B	R3/8	MBP03A	3/8 NPT	2,9 / 11,8
MB003B	R3/8	MB003A	3/8 NPT	4,9 / 20,0
MB004B	R1/2	MB004A	1/2 NPT	6,8 / 27,7
MBP06B	R3/4	MBP06A	3/4 NPT	7,2 / 29,4
MB006B	R3/4	MB006A	3/4 NPT	14,8 / 60,4
MB008B	R1	MB008A	1 NPT	18,0 / 73,4
MBP10B	R1 1/4	MBP10A	1 1/4 NPT	23,6 / 96,3

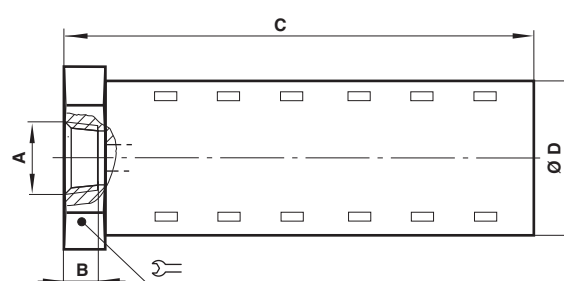
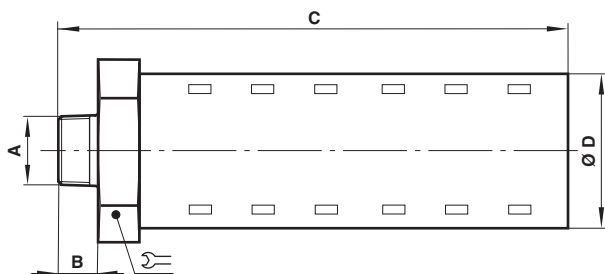
*1) measured in dm³/(s.bar)
 *2) measured in US gall/min

Female

Model	Port size	Model	Port size	Flow factor Cv *2)/(C *1)
MA001B	Rc1/8	MA001	1/8 NPT	0,8 / 3,26
MA002B	Rc1/4	MA002	1/4 NPT	2,4 / 9,79
MA003B	Rc3/8	MA003	3/8 NPT	5,7 / 23,3
MA004B	Rc1/2	MA004	1/2 NPT	6,9 / 28,1
MA006B	R3/4	MA006	3/4 NPT	18,0 / 73,4
MA008B	Rc1	MA008	1 NPT	20 / 81,6
MAP10C	Rp1 1/4	MA010	1 1/4 NPT	42 / 171,4
MAP12C	Rp1 1/2	MA012	1 1/2 NPT	39 / 159,1
MAP16C	Rp2	MA016A	2 NPT	59 / 241,0

*1) measured in dm³/(s.bar)
 *2) measured in US gall/min

Dimensions



Model	A	B	C	D		kg
MB001B, ...A	1/8 inch	9	51	21	21	0,03
MB002B, ...A	1/4 inch	13	55	21	21	0,03
MBP03B, ...A	3/8 inch	13	55	21	21	0,03
MB003B, ...A	3/8 inch	13	88	32	32	0,10
MB004B, ...A	1/2 inch	17	92	32	32	0,09
MBP06B, ...A	3/4 inch	17	92	32	32	0,09
MB006B, ...A	3/4 inch	20	134	51	51	0,45
MB008B, ...A	1 inch	23	138	51	51	0,40
MBP10B, ...A	1 1/4 inch	26	140	51	51	0,40

Model	A	B	C	Ø D		kg
MA001, ...B	1/8 inch	6	42	21	21	0,03
MA002, ...B	1/4 inch	9	45	21	21	0,03
MA003, ...B	3/8 inch	9	78	32	32	0,10
MA004, ...B	1/2 inch	12	83	32	32	0,09
MA006, ...B	3/4 inch	12	118	51	51	0,45
MA008, ...B	1 inch	15	118	51	51	0,40
MA010, ...C	1 1/4 inch	15	144	64	64	0,62
MA012, ...C	1 1/2 inch	15	144	64	64	0,60
MA016A, ...C	2 inch	16	168	76	76	0,76

Ordering example

To order a heavy duty silencer with port size R3/4
 quote: **MB006B**

Warning

These products are intended for use in industrial compressed air systems only. Do not use these products where pressures and temperatures can exceed those listed under 'Technical Data'.

Before using these products with fluids other than those specified, for non-industrial applications, life-support systems, or other applications not within published specifications, consult NORGREN.

Through misuse, age, or malfunction, components used in fluid power systems can fail in various modes.

The system designer is warned to consider the failure modes of all component parts used in fluid power systems and to provide adequate safeguards to prevent personal injury or damage to equipment in the event of such failure.

System designers must provide a warning to end users in the system instructional manual if protection against a failure mode cannot be adequately provided.

System designers and end users are cautioned to review specific warnings found in instruction sheets packed and shipped with these products.