

2/2-way valves DN 8 to DN 12

For neutral gases and liquids

Pressure actuated by external fluid

Diaphragm valves

Internal thread G 1/4 to G 1/2 or 1/4 NPT to 1/2 NPT

Operating pressure –0.9 to 6 bar

82710

82750

Description (standard valve)

Valve for neutral gases and liquids up to max. 80 mm²/s (cSt)

Switching function: normally closed
 Flow direction: as required
 Mounting position: as required

Process fluid characteristics / Valve material

Fluid temperature: –10 °C up to max. +90 °C
 Ambient temperature: –10 °C up to max. +50 °C
 Material body: Brass
 Seat seal: Fabric reinforced NBR diaphragm

Pilot fluid characteristics / Actuator material

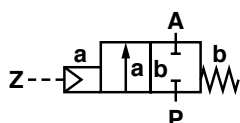
Pilot fluid: air, water, hydraulic oil
 Fluid temperature: max. +90 °C
 Body: Brass, PPO (cover)
 Seat seal: Fabric reinforced NBR diaphragm
 Pilot connection: G 1/8



Features

- Spindle seal with diaphragm
- Suitable for contaminated process fluids
- Optical position indicator is standard

Symbol



Bestellinformation

To order, quote model number from table overleaf, e. g. 8271200.0000 for a DN 12 valve.

Characteristic data

Valves

Part Number	Nominal Diameter (mm)	Connection size	Operating pressure *		Pilot pressure **		k _v -value *** (Base m ³ /h)	Weight (kg)
			min. (bar)	max. (bar)	min. (bar)	max. (bar)		
8271000.0000 8275000.0000	8	G 1/4 1/4 NPT	-0,9	6	3	8	1,9	0,75
8271100.0000 8275100.0000	10	G 3/8 3/8 NPT	-0,9	6	3	8	2,4	0,72
8271200.0000 8275200.0000	12	G 1/2 1/2 NPT	-0,9	6	3	8	2,9	0,70

* with gases and liquid fluids up to 80 mm²/s(cSt)

** for vacuum inset min. pilot pressure 4 bar

*** Cv-value (US) Å kv-value x 1,2

Note: Stainless steel design for number 50,51 **Stainless Steel**

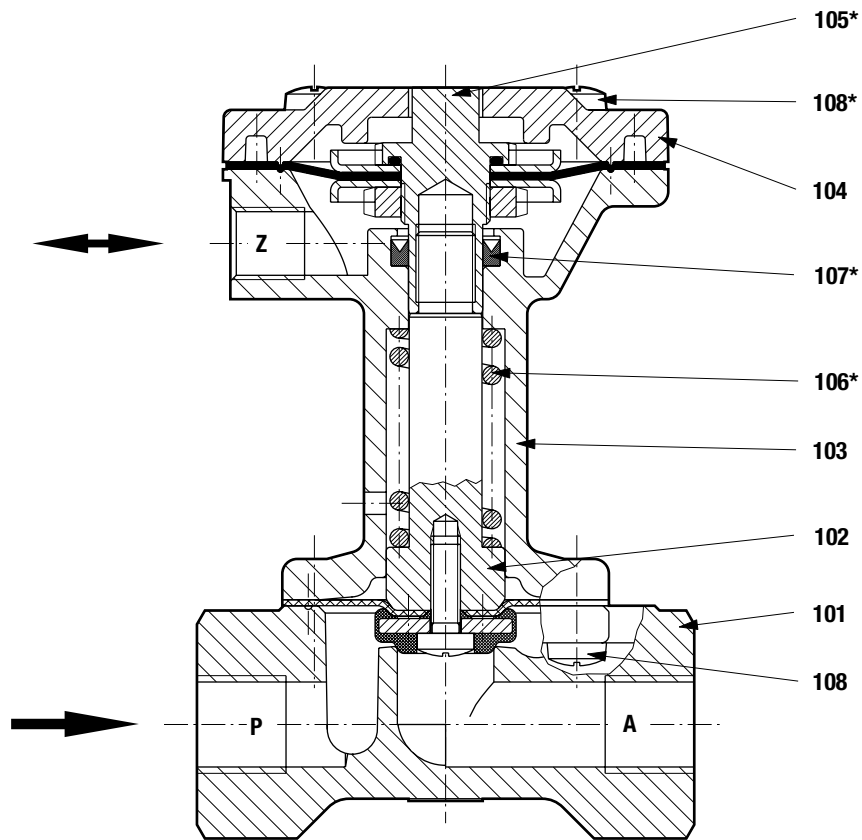
A 3/2 way solenoid pilot valve can be fitted at the pilot connection Z. These pilot valves are only for air, look at publication D111402.XX.XX.

Required parts	Part Number
1 pc. 3/2-way-solenoid valve DN 1,6	8466053.910X

Options (valves)

XXXXX01.XXXX	Normally Open
XXXXX03.XXXX	Seat seal FPM, FPM-fabric-diaphragm (Pos. 102), max fluid temperature +110 °C
XXXXX14.XXXX	Seat seal EPDM, EPDM-fabric-diaphragm (Pos. 102)
XXXXX50.XXXX	only for connection G 3/8 and G 1/2 Valve body stainless steel, internal parts stainless steel, Sandvik 1802
XXXXX51.XXXX	only for connection G 3/8 and G 1/2 Seat seal FPM, FPM-fabric-diaphragm (Pos. 102), valve body stainless steel, internal parts stainless steel, Sandvik 1802, max fluid temperature +110 °C
XXXXX52.XXXX	Seat seal: FPM, separating diaphragm PTFE-foil with FPM-diaphragm, body manufactured from 1.4581 stainless steel, internal parts with contact to fluids manufactured from 1.4571 stainless steel and A4 stainless steel, maximum fluid temperature +110 °C, 0 to 6 bar
On request	Further options

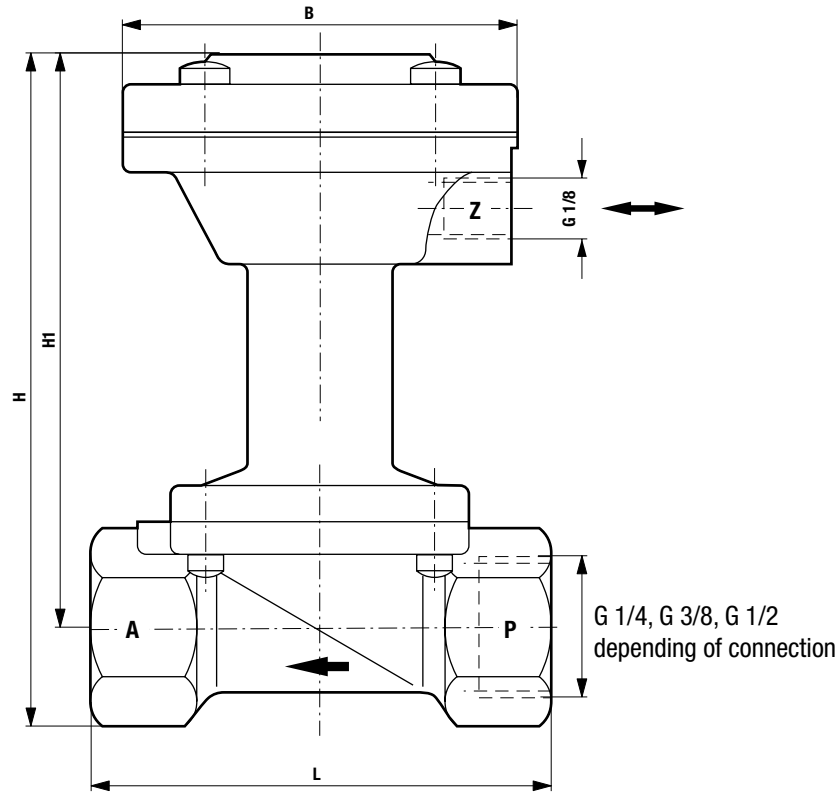
Section view



- 101 Valve body
- 102 Valve plate
- 103 Actuator housing
- 104 Actuator housing cover
- *105 Diaphragm
- *106 Pressure spring
- *107 Grooved ring
- *108 Oval head cap screw

*These individual parts form a complete wearing unit.
When ordering spare parts state Cat No and Series No.

Dimensions drawing



Part Number	Nominal Diameter (mm)	Connection size	L (mm)	B (mm)	H (mm)	H1 (mm)
8271000.0000 8275000.0000	8	G 1/4 1/4 NPT	67	60	101	86
8271100.0000 8275100.0000	10	G 3/8 3/8 NPT	67	60	101	86
8271200.0000 8275200.0000	12	G 1/2 1/2 NPT	67	60	101	86

Note to Pressure Equipment Directive (PED):
The valves of this series are according to Art. 3 § 3 of the Pressure Equipment Directive (PED) 97/23/EG.

This means interpretation and production are in accordance to engineers practice wellknown in the member countries.
A certificate of conformity ist not designated.