

Comprehensive range

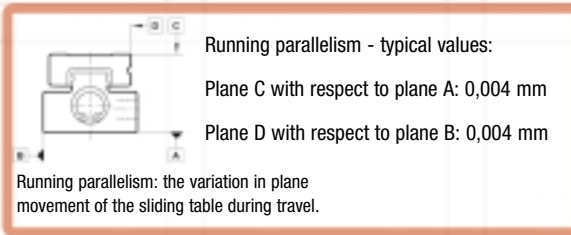
maximise output
minimise cost

Product selector

- Seven families with a large choice of options to solve virtually any application.
- Choose from two basic designs to suit your application.
- Rodless linear slide tables generally feature a single face for attaching loads **1** and are more compact than their rodless equivalents, providing linear motion within a set envelope.
- Rodded units offer much larger load bearing surfaces **2** and two faces for load installation **2** and **3**.

Outstanding accuracy

Reduce end of line component rejection rates and machine or process downtime. Key components such as bearings and guides are of superior quality. M/261000 and M/261100 families provide outstanding accuracy of movement, strength, reliability and rigidity which can optimise machine output.



Wider choice

Choose the best solution - precision models where accurate movement is essential or general purpose types for less critical applications.

Component protection

Maximise product life and minimise cost of ownership - standard stroke adjusters with rubber stops, metal stops for greater positioning accuracy or shock absorbers for heavier loads. Effective end of stroke cushioning protects internal components.

Consistent performance

Minimise downtime and component rejection rates - market leading design and construction provides the most consistent performance on the market.

Long service life

Minimise downtime - heat treated stainless steel or aluminum bodies and slide tables ensure an excellent service life.

Easy installation

Minimise installation time and cost - alternative air port (side or base) and switch rail positions.

Standard 2 year warranty

High operating speeds

Minimise process or machine cycle times - high operating speeds and cycle rates.

Compact size

Minimise machine cost - with a smaller installation and operating envelope.

Improved aesthetics

Enhance machine aesthetics - by selecting from a wide variety of diameters and stroke lengths to suit differing machine sizes.

Positional feedback

Easy attachment of switches enables seamless integration into fully interlocked systems.

M/261000/M Compact Precision

- Recirculating ball bearings.
- Our most compact linear slide table ideal for applications demanding precise movement within a confined space.
- Options include alternative air port and switch rail positions; base mounted air ports; no stroke adjustment; stroke adjustment with metal stops or shock absorbers.

M/261100/M Precision

- Roller guided.
- For precision applications demanding stroke lengths longer than those offered by the M/261000/M.
- Options include alternative air port and switch rail positions; no stroke adjustment; stroke adjustment with metal stops or shock absorbers.

M/261200/M Low Profile

- Roller guided.
- Slim and robust this general purpose family offers the largest load bearing surfaces for moving particularly wide or long loads.

M/261300/M Compact

- Roller guided.
- Rodless products that provide general purpose movement within a fixed envelope.
- Options include stroke adjustment with shock absorbers.

M/261400/M Synchronous

- Roller guided.
- Precise synchronous double slide table movement make these units ideal for use as escapements or grippers.
- Options include no stroke adjustment; stroke adjustment with metal stops.

M/61200/M Adjustable

- Slide guided.
- This family provides the greatest thrust values and the longest stroke lengths for general purpose applications.
- Optional air port location.

M/61200/MR Precision

- Recirculating ball bearings.
- These products provide the greatest thrust values and the longest stroke lengths for applications demanding accurate movement.
- Optional air port location.

Theoretical Moments

To calculate a theoretical moment use the following formula - Gravity acting on load (9,8) x mass of load W (kg) x distance between centre line of guide and load's centre of gravity, Lx, Ly, Lz (m). Calculated values should not exceed those stated.

† Maximum moment values correspond to the longest stroke length and will decrease as the stroke length shortens. Please refer to the relevant catalogue data sheet for full 'Theoretical Moment' information.

**Always consult the relevant catalogue data sheet for full technical information.

**data sheet 2.3.001

Piston diameter (mm)	Maximum load (kg)	Theoretical Moments (Nm)†	Stroke length (mm)	
		Mx My Mz		
6	0,2	0,87 0,42 0,42	5 or 10	M/261006/RS/IP/*
8	0,5	1,8 1,7 1,7	10 or 20	M/261008/MR6/IP/*
10	0,8	3,3 2,8 3,1	10 or 20	M/261010/MR6/IP/*
12	1,2	7,3 6,5 7,7	15 or 25	M/261012/MR6/IP/*
16	2,0	9,6 7,5 6,6	20 or 30	M/261016/MR6/IP/*

Part numbers denote standard magnetic models (except Ø6mm - non-magnetic only) with stroke adjustment (rubber stops).
* Insert stroke length in mm

**data sheet 2.3.003

Piston diameter (mm)	Maximum load (kg)	Theoretical Moments (Nm)†	Stroke length (mm)	
		Mx My Mz		
10	0,8	1,9 1,8 2,0	15, 30 or 45	M/261110/MR6/IP/*
12	1,2	3,8 3,0 3,4	20, 30, 45 or 60	M/261112/MR6/IP/*

Part numbers denote standard magnetic models with stroke adjustment (rubber stops).
* Insert stroke length in mm

**data sheet 2.3.005

Piston diameter (mm)	Maximum load (kg)	Theoretical Moments (Nm)†	Stroke length (mm)	
		Mx My Mz		
8	1,5	1,3 0,45 0,45	30, 45, or 60	M/261208/MR/I/*
10	2,0	2,1 0,79 0,88	30, 45 or 60	M/261210/MR/I/*
15	4,0	4,5 1,6 1,7	30, 45, 60, 80, or 100	M/261215/MR/I/*
20	8,0	1,3 3,6 3,4	30, 45, 60, 80 or 100	M/261220/MR/I/*

Part numbers denote standard magnetic models with stroke adjustment (rubber stops).
* Insert stroke length in mm

**data sheet 2.3.007

Piston diameter (mm)	Maximum load (kg)	Theoretical Moments (Nm)†	Stroke length (mm)	
		Mx My Mz		
10	0,8	1,8 1,3 1,3	10, 20 or 30	M/261310/MR6/IP/*
16	2,0	3,6 1,9 1,9	10, 20 or 30	M/261316/MR6/IP/*

Part numbers denote standard magnetic models with stroke adjustment (rubber stops).
* Insert stroke length in mm

**data sheet 2.3.009

Piston diameter (mm)	Maximum load (kg)	Theoretical Moments (Nm)†	Stroke length (mm)	
		Mx My Mz		
6	0,1	0,54 0,29 0,29	5 or 10	M/261406/MR1/I/*

Part numbers denote standard magnetic models, no stroke adjustment.
* Insert stroke length in mm

**data sheet 2.3.019

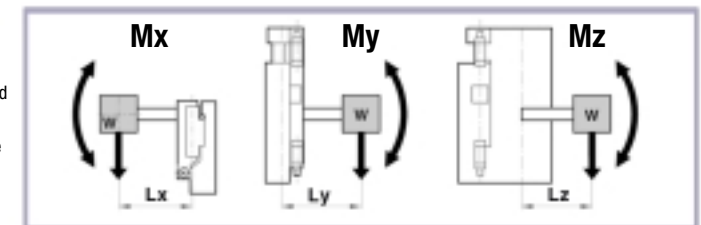
Piston diameter (mm)	Maximum load (kg)	Theoretical Moments (Nm)†	Stroke length (mm)	
		Mx My Mz		
16	2	10,0 14,0 14,0	25, 50, 75 or 100	M/61216/M/*
20	4	28,0 28,0 28,0	25, 50, 75, 100 or 150	M/61220/M/*
25	6	52,0 40,0 40,0	25, 50, 75, 100 or 150	M/61225/M/*
32	9	64,0 40,0 40,0	25, 50, 75, 100 or 150	M/61232/M/*

Part numbers denote standard magnetic models with stroke adjustment (rubber stops).
* Insert stroke length in mm

**data sheet 2.3.019

Piston diameter (mm)	Maximum load (kg)	Theoretical Moments (Nm)†	Stroke length (mm)	
		Mx My Mz		
16	2	24,0 24,0 14,0	25, 50, 75 or 100	M/61216/MR/*
20	4	26,0 10,0 10,0	25, 50, 75, 100 or 150	M/61220/MR/*
25	6	66,0 34,0 34,0	25, 50, 75, 100 or 150	M/61225/MR/*
32	9	120,0 48,0 48,0	25, 50, 75, 100 or 150	M/61232/MR/*

Part numbers denote standard magnetic models with stroke adjustment (rubber stops).
* Insert stroke length in mm



Sector markets

Norgren makes it easy

Complete automation solutions from one supplier. Norgren linear slides compliment our extensive array of pneumatic products, including grippers and rotary actuators.

Norgren linear slide tables are highly suitable for automated solutions in your industry.

Ideal for electronics

- Precise and smooth linear movement.
- Small sizes for handling light components and work pieces are available as standard.
- Optional cleanroom models available (M/261000/M Compact Precision series).

Ideal for packaging

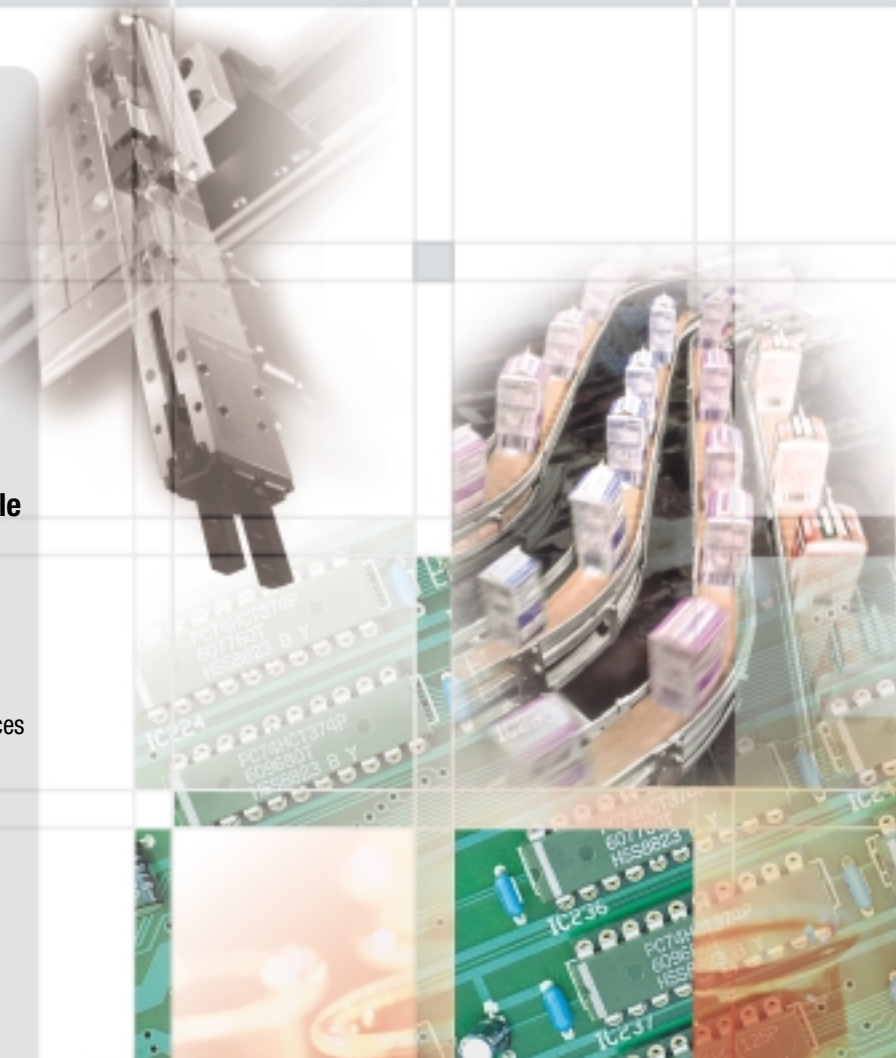
- Sizes to suit a variety of loads and duties.
- Solutions for both general purpose and precision applications.
- High operating speeds and cycle rates.

Ideal for medical

- Suitable for laboratory automation.
- All products can be used on unlubricated air supplies helping minimise environmental contamination.

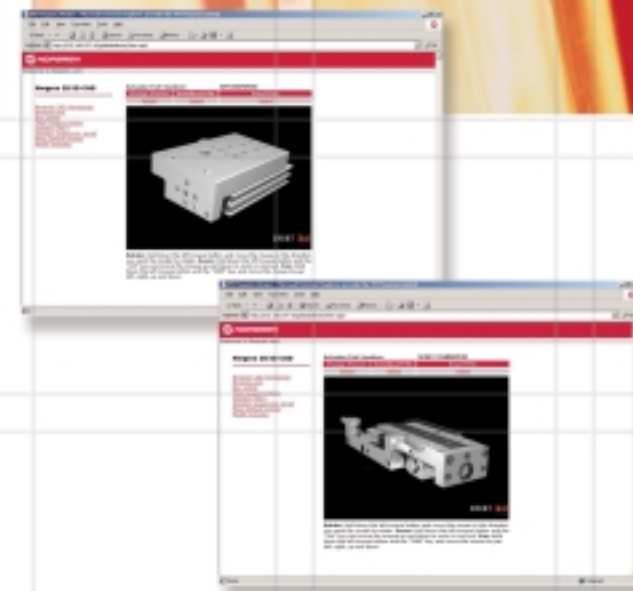
Ideal for your market

- Large family with a wide choice of product options (e.g. custom machine manufacture).
- Low weight (e.g. automated handling systems).
- Double (synchronous) linear movement (e.g. component feed and control).



www.norgren.com

Download 3D CAD files



Norgren global service network

AUSTRALIA

Tel: + 61 3 921 30 800
Fax: + 61 3 921 30 890
enquiry@norgren.com.au

AUSTRIA

Tel: + 43 22 36 63 520
Fax: + 43 22 36 63 520 20
enquiry@at.norgren.com

BELGIUM & LUXEMBOURG

Tel: + 32 2 376 60 20
Fax: + 32 2 376 26 34
enquiry@be.norgren.com

BRAZIL

Tel: + 55 11 5522 10 66
Fax: + 55 11 5523 22 59
vendas@norgren.com.br

CANADA

Tel: + 1 905 625 4060
Fax: + 1 905 625 9501/8273
inquiry@norgrenCanada.com

CHINA

Tel: + 86 21 64 85 79 35
Fax: + 86 21 64 95 60 42
norgrenb@public.bta.net.cn

CZECH REPUBLIC

Tel: + 420 446 612 879
Fax: + 420 446 612 908
enquiry@cz.norgren.com

DENMARK

Tel: + 45 44 91 41 66
Fax: + 45 44 91 15 60
norgren@norgren.dk

EASTERN EUROPE

Tel: + 43 2236 63520
Fax: + 43 2236 63520/124
enquiry@at.norgren.com

FINLAND

Tel: + 358 40 867 4958
Fax: + 358 95 712 1440
email: arki@imi-norgren.fi

FRANCE

Tel: + 33 1 60 05 92 12
Fax: + 33 1 60 06 08 52
norgrenherion@norgren.fr

GERMANY

North
Tel: + 49 2802 49-0
Fax: + 49 2802 49356

South

Tel: + 49 711/52 09-0
Fax: + 49 711/52 09-963
enquiry@de.norgren.com

HONG KONG

Tel: + 85 22 4927608
Fax: + 85 22 4985878
enquiry@hk.norgren.com

HUNGARY

Tel: + 36 1 284 9000
Fax: + 36 1 284 8980
info@norgren.hu

INDIA

Tel: + 91 11 681 7933
Fax: + 91 11 681 7932
norgrenindia@vsnl.net

IRELAND

Tel: + 353 1 8300 288
Fax: + 353 1 8300 082
enquiry@ie.norgren.com

ITALY

Tel: + 39 039 60 631
Fax: + 39 039 60 63 301
enquiry@norgren.com

JAPAN

Tel: + 81 66 876 8913
Fax: + 81 66 876 8929
Japan@imi-norgren.com

MALAYSIA

Tel: + 60 3 5219 255
Fax: + 60 3 5212 889
enquiry@my.norgren.com

MEXICO

Tel: + 52 5 390 2249
Fax: + 52 5 565 7072
enquiry@norgren.com.mx

NETHERLANDS

Tel: + 31 20 6822751
Fax: + 31 20 6820983
enquiry@nl.norgren.com

NEW ZEALAND

Tel: + 64 9 579 0189
Fax: + 64 9 526 3397
enquiry@norgren.co.nz

NORWAY

Tel: + 47 67 90 82 01
Fax: + 47 67 97 06 24
norgren@norgren.no

POLAND

Tel: + 48 22 871 7880
Fax: + 48 22 871 7881
biuro@pl.norgren.com

SINGAPORE

Tel: + 65 862 1811
Fax: + 65 862 1917
enquiry@sg.norgren.com

SLOVENIA

Tel: + 386 4 531 7550
Fax: + 386 4 531 7555
norgren@kralj-sp.si

SPAIN

Tel: + 34 93 748 9800
Fax: + 34 93 783 0838
norgren@norgren.es

SWEDEN

Tel: + 46 40 59 51 00
Fax: + 46 40 49 50 90
info@imi-norgren.se

SWITZERLAND

Tel: + 41 71 973 82 00
Fax: + 41 71 973 82 01
norgren@norgren.ch

UK

Tel: + 44 1543 265 000
Fax: + 44 1543 265 811
enquiry@uk.norgren.com

USA

Tel: + 1 303 794 2611
Fax: + 1 303 795 9487
inquiry@usa.norgren.com

Supported by distributors worldwide.



Norgren is a leading world manufacturer and supplier of pneumatic solutions, offering a comprehensive range of pneumatic components and automation systems via a global sales and service network which covers 75 countries worldwide. The company is a principal member of the diverse and internationally successful £1.6 billion IMI Group.

www.norgren.com



IMI Norgren Limited

P.O. Box 22, Eastern Avenue, Lichfield, Staffordshire WS13 6SB, England
Telephone: +44 (0)1543 265000 Fax: +44 (0)1543 265827

The Roundel, 'Norgren' and 'IMI' are registered trade marks. © IMI Norgren Limited 2003.
Due to our policy of continued development, Norgren reserve the right to change specifications without prior notice.



a subsidiary of IMI plc
z6639-IPS UK/09/03

Linear slide tables

Precise, compact and lightweight



- Seven ranges plus a large array of options.
- Extremely precise linear slide tables.
- Market leading design and construction.
- Ideal for electronics, packaging and many other automation applications.

