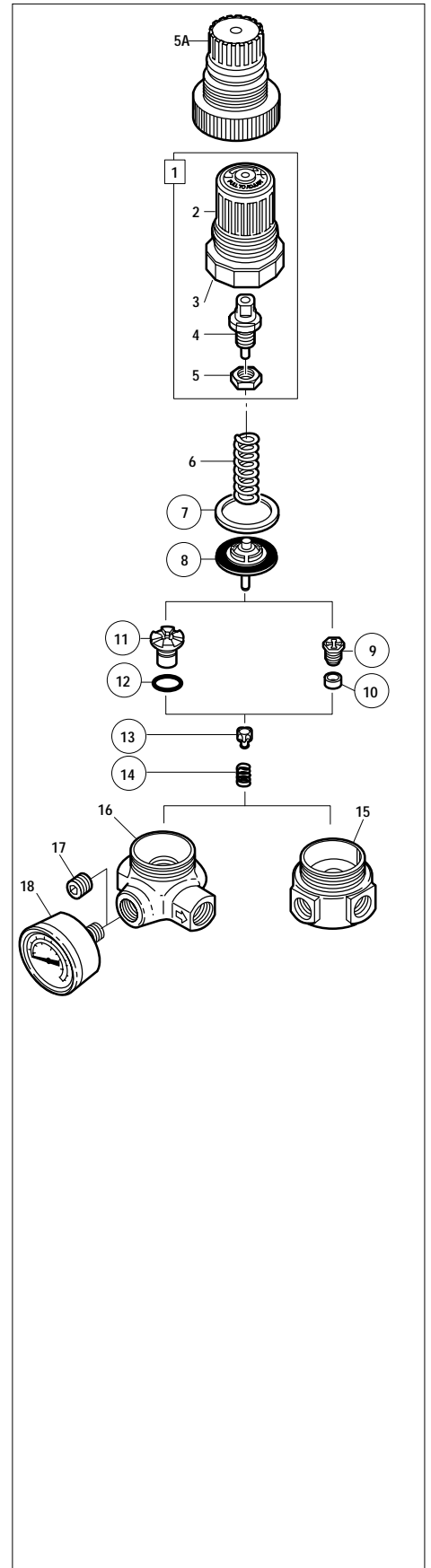


In the following parts list, assemblies are printed in capital letters. Parts that are included with an assembly are listed and indented directly beneath it. When an assembly is ordered, the assembly and all parts indented beneath it are included in the shipment.

ITEM	DESCRIPTION	PART NO.	QTY
1	BONNET ASSY (current models).....	2950-10	1
2	● Knob, adjusting.....	2951-70	1
3	● Bonnet.....	2950-86	1
4	● SCREW ASSY, adjusting.....	2954-55	1
5	● ● Nut, pressure.....	2953-05	1
5A	Bonnet (early models).....	Replaced by item 1	1
6	Spring, regulating, 0,1 to 0,7 bar (1 to 10 psig).....	2069-02	1
	Spring, regulating, 0,3 to 3,5 bar (5 to 50 psig).....	613-03	1
	Spring, regulating, 0,3 to 7 bar (5 to 100 psig).....	2960-04	1
7	Slip ring (service kit item).....	615-01	1
8	Diaphragm, relieving (service kit item).....	3412-30	1
	Diaphragm, non-relieving (service kit item).....	3412-31	1
9	VALVE SEAT ASSY, STANDARD, (early models) (service kit item) *.....	3402-51	1
	VALVE SEAT ASSY, LOW FLOW, (early models) *.....	3402-50	1
10	● Seal, (early models) (service kit item) *.....	1956-05	1
11	VALVE SEAT ASSY, STANDARD, (current models) (service kit item)*.....	3402-57	1
	VALVE SEAT ASSY, LOW FLOW, (current models) *.....	3402-56	1
12	● O-ring, (current models) (service kit item)*.....	1741-01	1
13	Valve (service kit item).....	2959-50	1
14	Spring, valve (service kit item).....	2799-01	1
15	Body (early models).....	Not normally replaced	1
16	Body (current models).....	Not normally replaced	1
17	Plug, pipe, 1/8 PTF (service kit item).....	2338-08	2
	Plug, pipe, ISO Rc 1/8 (service kit item).....	2338-99	2
18	Gage, pressure, 1/8 PTF, 2 bar (30 psig).....	18-013-214	1
	Gage, pressure, 1/8 PTF, 4 bar (60 psig).....	18-013-211	1
	Gage, pressure, 1/8 PTF, 10 bar (150 psig).....	18-013-212	1
	Gage, pressure, ISO R1/8, 4 bar (60 psig).....	18-013-990	1
	Gage, pressure, ISO R1/8, 10 bar (150 psig).....	18-013-989	1
	Gage, pressure, ISO R1/8, 25 bar (300 psig).....	18-013-908	1

SERVICE KITS & ACCESSORIES

Service kit for regulators with standard valve seat (items circled on exploded view) *	
Relieving regulators.....	3407-02
Nonrelieving regulators.....	3407-01
Kit, pipe plug, 1/8 PTF - item 24 - contains two.....	3723-01
Kit, pipe plug, ISO R1/8 - item 24 - contains two.....	3723-06
Wall mounting bracket.....	5095-17
Wall mounting bracket & plastic panel nut.....	18-025-003
Plastic panel nut.....	2962-89
Metal panel nut.....	2962-04
Tamper resistant locking screw and adjusting knob (current models).....	18-001-092
Tamper resistant locking screw (current models).....	6097-08
Tamper resistant seal wire (early models).....	2117-01



* Kit contains early and current valve seats (9, 11) and seals (10, 12). Replace used seat and seal with identical parts from the kit. Use valve seat & o-ring (9,10) only in body style 15. Use valve seat & o-ring (11, 12) only in body style 16.