

SOLENOID ACTUATED 22 MM POPPET VALVES

Excel 22, M/49 series

In-line and sub-base mounted – 3/2, NC, G1/8

Sub-base mounted and manifold mounted
– compact and convenient

Manual override as standard

TECHNICAL DATA

Medium:

Compressed air, filtered to 40µm,
lubricated or non-lubricated

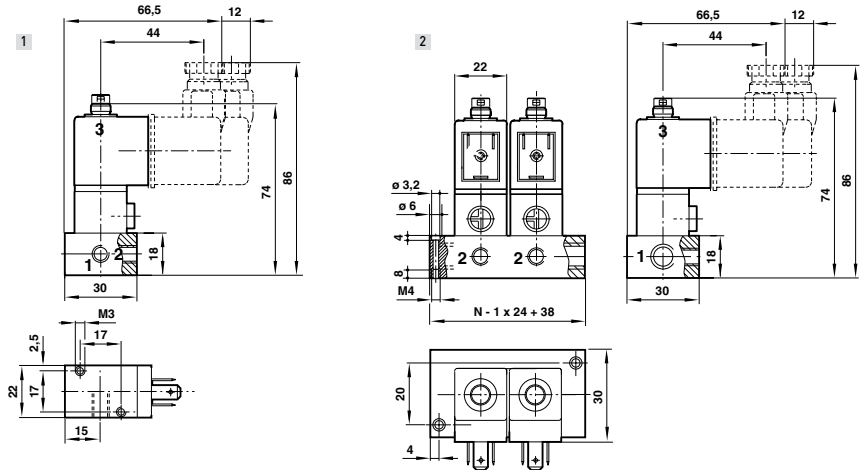
Operating pressure:

0 to 10 bar









Ambient temperature:

-20°C to +50°C

Consult our Technical Service for use below +2°C.



Models

1MM ORIFICE low power Model	Actuation	Port size	Flow (l/min)	Operating pressure (bar)	Mounting	Drawing No.	Straight fitting	Elbow fitting	Basic plug
									
M/49/MAZ***	3/2 NC	G1/8	30	0..10	Single	1	C02250618	C02470618	M/P19063
DM/49/MAZ***/T*	3/2 NC	G1/8	30	0..10	Manifold	2	C02250618	C02470618	M/P19063
1,6MM ORIFICE Model	Actuation	Port size	Flow (l/min)	Operating pressure (bar)	Mounting	Drawing No.	Straight fitting	Elbow fitting	Basic plug
									
M/49/MDZ***	3/2 NC	G1/8	77	0..10	Single	1	C02250618	C02470618	M/P19063
DM/49/MDZ***/T*	3/2 NC	G1/8	77	0..10	Manifold	2	C02250618	C02470618	M/P19063

*** Insert voltage codes from table below. # Add number of valves in manifold up to 6 maximum.
Order connector plugs separately.

Voltage codes and spare coils

Voltage	1,0 mm orifice (low power)			1,6 mm orifice		
	Code	Power	Coil	Code	Power	Coil
12 V d.c.	12J	2 W	QM/48/12J/21	82J	7,5 W	QM/48/82J/21
24 V d.c.	13J	2 W	QM/48/13J/21	83J	6 W	QM/48/83J/21
24 V 50/60 Hz	14J	4/2,5 VA	QM/48/14J/21	84J	12/8 VA	QM/48/84J/21
110/120 V 50/60 Hz	18J	4/2,5 VA	QM/48/18J/21	88J	12/8 VA	QM/48/88J/21
220/240 V 50/60 Hz	19J	6/5 VA	QM/48/19J/21	89J	12/8 VA	QM/48/89J/21



For further information
www.norgren.com/info/nec/en108

Accessories

EXPRESS LINKS

Connectors and cables

For a full selection of 22 mm
Industrial Standard plugs
and cables please see page 151

