

# IN-LINE EXCESS FLOW SHUT-OFF VALVES

## T60 air fuses

1/4 ... 1 1/2" BSSP



- Assists in complying with safety regulations
- Tamper proof
- Compact and safe design
- Low pressure drop
- Automatically resets after failure correction
- High corrosion resistance
- High air pressure rating



### TECHNICAL DATA

#### Medium:

Compressed air, filtered, lubricated and non-lubricated inert gases

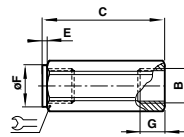
#### Operating pressure:

Maximum 16 bar, minimum according to hose length

#### Ambient temperature:

-20°C to +80°C

Consult our Technical Service for use below +2°C.



### MATERIALS

**Body:** aluminium

**Internal parts:** brass

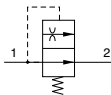
**Spring:** stainless steel

### Dimensions

Model	B	C	E	Ø F	G	Ø
T60C2890	G1/4	51	3	21	11	21
T60C2891	G1/4	51	3	21	11	21
T60C3890	G3/8	62	5	24	14	24
T60C3891	G3/8	62	5	24	14	24
T60C4890	G1/2	78	5	32	15	32
T60C4891	G1/2	78	5	32	15	32
T60C6890	G3/4	90	5	32	19	32
T60C6891	G3/4	90	5	32	19	32
T60C8890	G1	118	5	50	19	50
T60C8891	G1	118	5	50	19	50
T60CB890	G1 1/2	145	5	64	25,5	64
T60CB891	G1 1/2	145	5	64	25,5	64

### Models

Model	Function	Port size BSSP	Drop pressure at shut off flow (bar)	Shut off flow rate at 7 bar (dm³/s) ±10%	Flow at 7 bar Δ P 0,07 bar (dm³/s)
-------	----------	----------------	--------------------------------------	--	------------------------------------



T60C2890		1/4	0,14	8,3	6,5
T60C2891		1/4	0,3	14	6,5
T60C3890		3/8	0,14	19,4	13,5
T60C3891		3/8	0,3	32,2	13,5
T60C4890		1/2	0,14	32,2	23,2
T60C4891		1/2	0,3	48,3	23,2
T60C6890		3/4	0,14	48,3	43
T60C6891		3/4	0,3	80	43
T60C8890		1	0,14	92	68
T60C8891		1	0,3	128	68
T60CB890		1 1/2	0,14	186	145
T60CB891		1 1/2	0,3	268	145

BSSP: according to BS2779 and ISO 228/1.

Flow and pressure test conducted according to ISO 6358 test circuit. Mean measured flow values are provided at standard reference conditions.



For further information  
[www.norgren.com/info/nec/en140](http://www.norgren.com/info/nec/en140)