

# NON-RETURN VALVES T55 series

In-line M5, 1/8, 1/4, 3/8, 1/2" BSPP, BSPT



Permit free flow of air in one direction only

Simple, reliable design

Silicone free

Low cracking pressure

## TECHNICAL DATA

### Medium:

Compressed air, filtered, lubricated and non-lubricated

### Operating pressure:

0,1 to 10 bar

### Ambient temperature:

-20°C to +80°C

Consult our Technical Service for use below +2°C.

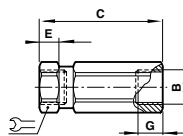
## MATERIALS

Body: aluminium

O-ring: nitrile rubber

Valve: POM

Spring: stainless steel

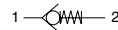


## Dimensions

Model	B	C	E	G	
T55M0500	M5	27,5	4	5	11
T55C1800	G1/8	42,5	7	7	14
T55*2800	G1/4	54	8	10,5	17
T55*3800	G3/8	63	9	12	24
T55*4800	G1/2	77	12	15	27

## Models

METRIC Model	BSPP	BSPT	Function	Port size	Flow factor C*	CV	Cracking pressure (bar)
--------------	------	------	----------	-----------	----------------	----	-------------------------



T55M0500	-	-		M5	0,8	0,19	0,05
-	T55C1800	-		1/8	2,4	0,59	0,05
-	T55C2800	T55B2800		1/4	5,5	1,35	0,05
-	T55C3800	T55B3800		3/8	9,0	2,20	0,05
-	T55C4800	T55B4800		1/2	15,0	3,70	0,05

\*C: measured in dm<sup>3</sup>/(s.bar)

For further information  
[www.norgren.com/info/nec/en141](http://www.norgren.com/info/nec/en141)

