

PUSH-IN NON-RETURN VALVES T51, T52 and T53 series

In-line - Ø 4, 5, 6, 8, 10, 12 mm O/D tube

TECHNICAL DATA

Medium:

Compressed air, filtered, lubricated or non-lubricated, vacuum

Operating pressure:

0,1 to 10 bar (T51, T52), 0,3 to 10 bar (T53),
-0,1 to -1 bar vacuum (T51, T52)

Ambient temperature:

-20°C to +80°C

Consult our Technical Service for use below +2°C

Mounting:

Tube/tube PIF, Tube PIF/male thread,
Male thread/tube PIF

MATERIALS

4, 6, 8 mm O/D

Body: plastic PBT

Release sleeve: plastic POM

Natural brass insert

Seal: silicon free nitrile

Spring: stainless steel

Grab ring: stainless steel, BS 1440 Pt 2, grade 301.S21

T52 and T53 series, nickel plated brass threads

5, 10, 12 mm O/D

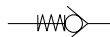
Collet: nickel plated brass

Body: black anodised aluminium

Valve and insert: aluminium

Models

PIF/PIF METRIC Model	Function	Tube size	Flow factor C/CV*	Cracking pressure (bar)	Minimum operating pressure (bar)**
----------------------	----------	-----------	-------------------	-------------------------	------------------------------------



T51P0004	tube/tube	4 mm	0,75/0,18	0,03+0,06	0,1
T51P0005	tube/tube	5 mm	1,16/0,28	0,03+0,06	0,1
T51P0006	tube/tube	6 mm	1,9/0,47	0,03+0,06	0,1
T51P0008	tube/tube	8 mm	3,5/0,86	0,03+0,06	0,1
T51P0010	tube/tube	10 mm	4,7/1,15	0,03+0,06	0,1
T51P0012	tube/tube	12 mm	7,5/1,84	0,03+0,06	0,1

PIF to Male Thread Model	Male Thread to PIF Model	Function	Port size x tube size BSPT x metric	Flow factor C/CV*	Cracking pressure (bar)	Minimum operating pressure (bar)**
--------------------------	--------------------------	----------	-------------------------------------	-------------------	-------------------------	------------------------------------



T52B1804	-	tube/thread	R1/8 x 4 mm	0,75/0,18	0,03+0,06	0,1
T52B2805	-	tube/thread	R1/4 x 5 mm	1,16/0,28	0,03+0,06	0,1
T52B1806	T53B1806	tube/thread	R1/8 x 6 mm	1,9/0,47	0,03+0,06	0,1

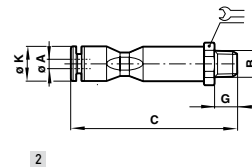
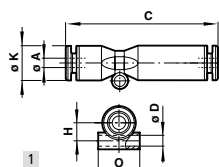


T52B2806	T53B2806	tube/thread	R1/4 x 8 mm	3,5/0,86	0,03+0,06	0,1
T52B1808	-	tube/thread	R1/8 x 10 mm	4,7/1,15	0,03+0,06	0,1
T52B2808	T53B2808	tube/thread	R1/4 x 12 mm	7,5/1,84	0,03+0,06	0,1



For further information
www.norgren.com/info/nec/en142

* Cv measured in dm³/(s.bar) ** Minimum operating pressure 0,3 bar for T53



Dimensions

Model	Ø A	C	Ø D	Ø K	H	O	Drawing No.
T51P0004	4	50	4,3	11	5,5	11,5	1
T51P0005	5	53	4,3	13	6,5	13,5	1
T51P0006	6	55,5	4,3	13	6,5	13,5	1
T51P0008	8	62,5	4,3	14,5	7,5	15	1
T51P0010*	10	77,5	-	20	-	-	1
T51P0012*	12	88,5	-	22	-	-	1

Model	Ø A	B	C	G	Ø K	Ø	Drawing No.
T52B1804	4	R1/8	54,5	9,5	11	12	2
T52B2805	5	R1/4	59,5	11	13	15	2
T52B1806	6	R1/8	59,5	9,5	13	15	2
T52B2806	6	R1/4	60,5	11	13	15	2
T52B1808	8	R1/8	63,5	9,5	14,5	15	2
T52B2808	8	R1/4	62,5	11	14,5	15	2

Model	Ø A	B	C	G	Ø K	Ø	Drawing No.
T53B1806	6	R1/8	59,5	9,5	13	15	2
T53B2806	6	R1/4	60,5	11	13	15	2
T53B2808	8	R1/4	62,5	11	14,5	15	2