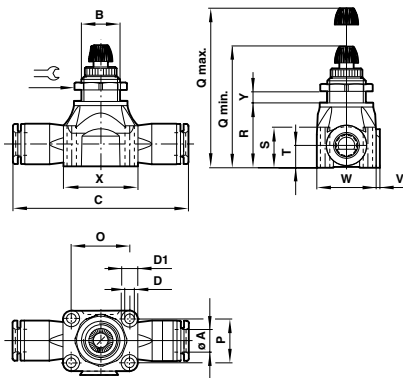


PUSH-IN FLOW REGULATORS, UNI-DIRECTIONAL

T15 series In-line - Ø 3, 4, 5, 6, 8, 10, 12 O/D metric tube



Dimensions

Model	A	B	C	ØD	D1	O	P		Q	R	S	T	V	W	X	Y	
							max	min									
T15P0003	3	M10x1,0	46	2,4	4,2	13	13	9	35	30,5	17	11,1	6,2	0,9	13	17	1,5
T15P0004	4	M10x1,0	46	2,4	4,2	13	13	9	35	30,5	17	11,1	6,2	0,9	13	17	1,5
T15P0005	5	M12x1	49	3,5	6,2	15	19	11	45,5	39	21	14,7	7,5	1,1	17	25	4
T15P0006	6	M12x1	55	3,5	6,2	15	19	11	45,5	39	21	14,7	7,5	1,1	17	25	4
T15P0008	8	M14x1,5	65,5	3,5	6,2	18	21	15,5	52	44	23,5	14,7	8,1	1,3	21,5	27	4
T15P0010	10	M20x1,5	76,8	4,4	7,9	24	26,5	19	61,5	53	29	18,9	10	1,6	26,5	34	5
T15P0012	12	M20x1,5	92,5	4,4	7,9	24	28,5	22,5	66	55,5	32	22,2	12,1	1,6	30	36	5

EXPRESS LINKS

Push-in flow regulators...

Please see Pneufit C range in the fittings section for further options



Models

METRIC Model	Function	Tube size	Max. regulated flow factor C/CV**	Flow factor C/CV**	Cracking pressure (bar)	Minimum operating pressure (bar)**
T15P0003		3 mm	0,35/0,09	>0,35/0,09	0,1	0,1
T15P0004		4 mm	0,45/0,11	>0,45/0,11	0,1	0,1
T15P0005*		5 mm	0,8/0,2	0,8/0,2	0,1	0,1
T15P0006		6 mm	1,4/0,34	>1,4/0,34	0,1	0,1
T15P0008		8 mm	2,2/0,54	>2,2/0,54	0,1	0,1
T15P0010		10 mm	3,9/0,96	>3,9/0,96	0,1	0,1
T15P0012*		12 mm	5,4/1,32	>5,4/1,32	0,1	0,1

* Available only as collet tube connection. ** C measured in dm³/(s.bar)

High flow performance

Suitable for panel/wall mounting and manifold

Adjustment can be locked

Captive regulator needle will not blow out when unscrewed

Adjusting knob position

Releasable grab ring technology combining plastic and brass components for a compact and superior fitting design

Red release sleeve indicating metric tube sizes

Reliable and corrosion resistant

TECHNICAL DATA

Medium:

Compressed air, filtered, lubricated or non-lubricated

Operating pressure:

0,1 to 10 bar maximum

Ambient temperature:

-20°C to +80°C

Consult our Technical Service for use below +2°C

Mounting:

In-line. Panel mounted by hexagonal mounting nut.

Wall mounted by through-holes in regulator body.

Manifold by quick connection

MATERIALS

Ø 3, 4, 6, 8, 10 O/D:

Body: plastic PBT

Release sleeve, nut, knob: plastic POM

Seals: silicone free nitrile seal

External metal parts: nickel plated brass

Internal parts: brass

Spring: stainless steel

Grab ring: stainless steel, BS 1440 Pt 2, grade 301.S21

Ø 5, 12 O/D:

Collet: nickel plated brass

For further information
www.norgren.com/info/nec/en143

