

EXHAUST FLOW REGULATOR/SILENCERS

T20 & 0405 series

M5, G1/8 ... G1/2



Compact, integral flow regulator and silencer units

Captive regulating needle will not blow out when unscrewed

Reduced dimensions



TECHNICAL DATA

Medium:

Compressed air, filtered, lubricated and non-lubricated, inert gases

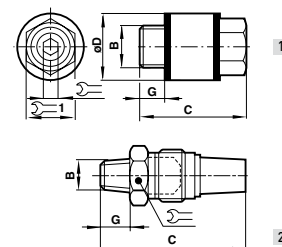
Operating pressure:

0 to 10 bar

Ambient temperature:

-20°C to +80°C.

Consult our Technical Service for use below +2°C.



MATERIALS

T20:

Body and washer: nylon

Silencer: porous polyethylene

Adjusting screw: high tensile zinc electroplated steel

0405:

Body and nut: brass

Needle: plastic


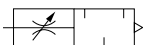
Silencer: sintered bronze

Dimensions

Model	B	C	G	Ø D	1	1	Drawing No.
T20M0500	M5	16	5	-	1,5	8	1
T20C1800	G1/8	20,5	6	15	2,5	13	1
T20C2800	G1/4	29	7	18	4	15	1
T20C3800	G3/8	38	8	24	6	20	1
T20C4800	G1/2	50	10	30	8	25	1

Model	B	C	G	1	Drawing No.
04057100	R1/8	44,5	9,5	15	2
04057200	R1/4	46	10,5	15	2
04057300	R3/8	67,5	12,5	24	2
04057400	R1/2	69,5	16	24	2

Models

Model	Function	Thread	Port size	Max. regulated flow factor C** CV	
					
T20M0500		Metric	M5	0,3	0,07
T20C1800		BSPP	1/8	1,6	0,4
04057100		BSPT	1/8	1,78	0,44
T20C2800		BSPP	1/4	3,2	0,8
04057200		BSPT	1/4	1,78	0,44
04059200		BSPP (female)	1/4 Silencer only	-	-
T20C3800		BSPP	3/8	6,9	1,7
04057300		BSPT	3/8	8,9	2,2
T20C4800		BSPP	1/2	10	2,4
04057400		BSPT	1/2	8,9	2,2

** C measured in dm³/(s.bar)



For further information
www.norgren.com/info/nec/en148