

# MINIATURE UNITS, GENERAL PURPOSE

## Filter regulator

B07 – G1/8, G1/4

Filter-regulators for all general purpose pneumatic applications

High performance design provides high flow with minimum pressure drop

Non-rising adjusting knob has snap-action lock

Transparent bowl for 360° visibility

### TECHNICAL DATA

**Medium:**

Compressed air only

**Maximum inlet pressure:**

10 bar

**Gauge ports:**

Rc1/8

**Pressure range:**

0,3...7 bar

**Ambient temperature:**

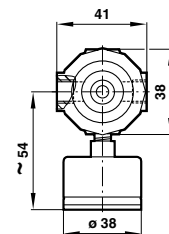
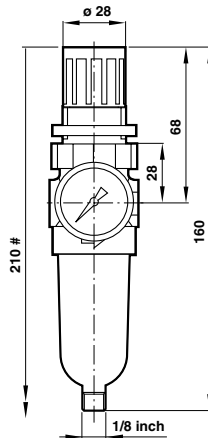
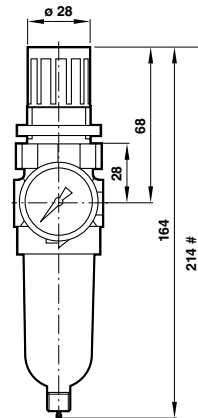
-34°C to +50°C

Consult our Technical Service for use below +2°C





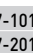
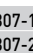
Manual drain

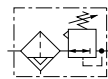
Auto drain







# Minimum clearance required to remove bowl

### Models

B07 SERIES AUTO DRAIN Model	MANUAL DRAIN Model	Port size	Flow* (dm <sup>3</sup> /s)
		G 1/8	6,2
		G 1/4	6,5



### Accessories

Neck mounting bracket (incl. nut)	Mounting nut only plastic	Mounting nut only metal	Gauge
			
18-025-003	2962-89	2962-04	18-013-989
18-025-003	2962-89	2962-04	18-013-989

### Service Kit

Auto drain	Manual drain
	
B07-KITA40R	B07-KITM40R
B07-KITA40R	B07-KITM40R

\* Typical flow with 10 bar inlet pressure, 6,3 bar set pressure and 1 bar drop



For further information  
[www.norgren.com/info/nec/en206](http://www.norgren.com/info/nec/en206)