

**Exhaust flow regulators
M5, G1/8 to G1/2****Reduced dimensions**

**Captive regulating needle will not blow out
when unscrewed**

**Technical data**

Medium:

Compressed air, filtered, lubricated
and non-lubricated, inert gases

Operating pressure:
0 to 10 bar

Ambient temperature:
-20°C to +80°C.

(consult our Technical Service
for use below +2°C)

Mounting:

Directly in the exhaust port.

Allen key adjustment for flow regulation

Materials

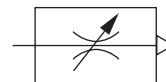
Body & washer: nylon

Silencer: porous polyethylene

Adjusting screw: high tensile zinc electroplated steel

Ordering information

Exhaust flow regulator G1/8
quote: T20C1800



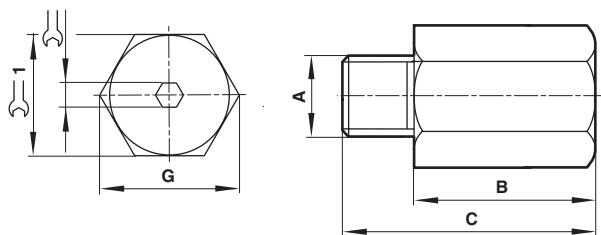
General information

Model	Port size	Max. regulated flow factor	
		C*	Cv
T20M0500	M5	0,3	0,07
T20C1800	G1/8A	1,6	0,4
T20C2800	G1/4A	3,2	0,8
T20C3800	G3/8A	6,9	1,7
T20C4800	G1/2A	10	2,4

* C: measured in dm³/(s. bar)

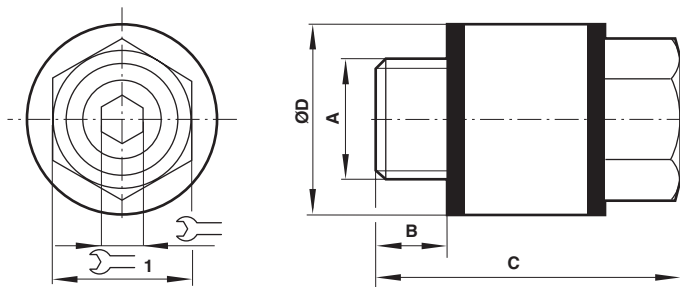
Dimensions

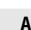
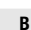
T20M0500



Type	A	B	C	G		 1
T20M0500	M5	11	16	9,3	1,5	8

T20C*800



Type	A	B	C	Ø D		 1
T20C1800	G1/8A	6	20,5	15	2,5	13
T20C2800	G1/4A	7	29	18	4	15
T20C3800	G3/8A	8	38	24	6	20
T20C4800	G1/2A	10	50	30	8	25

Warning

These products are intended for use in industrial compressed air systems only. Do not use these products where pressures and temperatures can exceed those listed under 'Technical data'.

Before using these products with fluids other than those specified, for non-industrial applications, life-support systems, or other applications not within published specifications, consult NORGREN. Through misuse, age, or malfunction, components used in fluid power systems can fail in various modes.

The system designer is warned to consider the failure modes of all component parts used in fluid power systems and to provide adequate safeguards to prevent personal injury or damage to equipment in the event of such failure.

System designers must provide a warning to end users in the system instructional manual if protection against a failure mode cannot be adequately provided.

System designers and end users are cautioned to review specific warnings found in instruction sheets packed and shipped with these products.